

Stagg®

USER MANUAL



HD5A

Please read the instructions carefully before use

SAFETY INSTRUCTIONS



Please read the instructions carefully as they include important information about the installation, operation and maintenance.

- Please keep this user's guide for future consultation. If you sell the unit to another user, be sure that they also receive this instruction booklet.
- All products leave the manufacturer intact. Please note that any damages incurred by the user is not covered by the guarantee.
- Unpack and check carefully that there is no transportation damage before using the unit.
- The unit is for indoor use only. Use only in a dry location.
- This speaker is able to induce high acoustic sound pressure. Please follow your regional rules in order to prevent irreversible ear damages.
- Never operate the items standing on any kind of transportation board.
- Make sure that no ventilation slot is blocked, otherwise the unit will overheat.
- Before operating, ensure that the voltage and frequency of the power supply match the power requirements of the unit.
- Make sure all equipment is properly earthed.
- Do not operate the unit if the ambient temperature is higher than 40°C.
- On the first start, there may be some normal operational start-up smell.
- Look over power wires carefully and replace immediately if there is any damage.
- Never run on for a long time lest shortening lifespan. Avoid any inflammable liquids, water or metal objects entering the unit. In case it happens, cut off the mains power immediately.
- Do not operate in a dirty or dusty environment. Clean the equipment regularly.
- Do not allow children unsupervised to operate the fixture.
- Do not touch any wire during operation as there might be a hazard of electric shock.
- Avoid placing power wires next to other cables.
- Disconnect the mains power before replacing or servicing the fuses.
- Replace fuse only with the same type.

- In the event of a serious operating problem, stop using the unit immediately.
- Never turn on and off the unit time after time.
- The housing and components must be replaced if they are visibly damaged.
- Do not open the unit as there is no user serviceable part inside.
- Never try to repair the unit by yourself. Repairs carried out by unskilled people can lead to damage or malfunction. Please contact the nearest authorized technical assistance centre.
- Disconnect the mains power if the fixture is not used for a long time.
- Use the original packaging to transport regarding any warranty issue.

INTRODUCTION

Thank you for purchasing our HD5A studio monitor. Music is Stagg's DNA. We have created this product as a tribute to this... and to you. Therefore, we guarantee a high-quality product to get you playing.

Precise and accurate, our studio monitors are perfect for musicians, audio engineers and music producers with an ear for detailed sound. Designed with a neutral sound image and offer excellent pan positioning. Find that sweet spot mix with Stagg's Studio Monitor series.

TECHNICAL SPECIFICATIONS

Model: HD5A

Dimensions	cm/inch	22,5 (8,9") x 18,5 (7,3") x 31 (12,2")
Net weight	kg	5,5
Configuration	Way	2
Internal amplifier	W RMS	60 (LF) + 30 (HF)
Frequency response	at -6dB	65Hz to 30k Hz
Maximum SPL	dB	109
Low frequency woofer	inch	5
High frequency driver	inch	1
Crossover frequency	kHz	2,7
Line inputs		1 x Balanced 6.35 mm plug (1/4") 1 x XLR
Input sensitivity	Volt	0,775
Power cord	m/ft	1.5 /4.6"

The HD5A uses a 5" magnetically shielded mineral-filled polypropylene cone with high-temperature voice coil and damped rubber surround.

Tips for optimal monitors placement

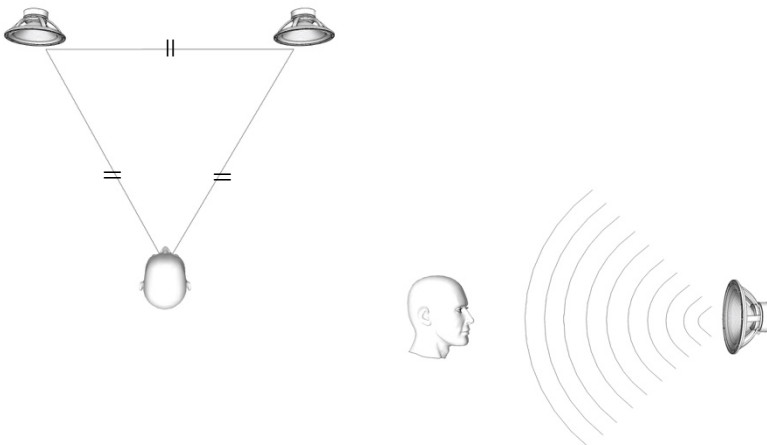
To help you to find the “sweet spot”, here are some tips to place your monitors correctly.

1. Symmetry

To start with, you should form an equilateral triangle with your two monitors and your head. This means that the distance between the two speakers and the distance between the speakers and your listening spot should be the same. Besides, put your working station in the middle of a wall, not in a corner. You will have a more symmetrical situation, which is much better to place your sounds in your panoramic environment with accuracy.

2. Correct height

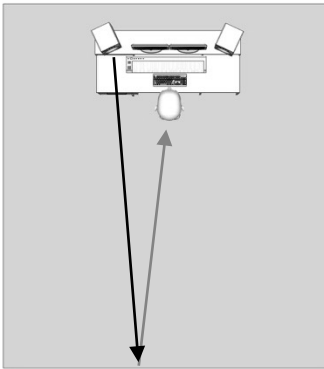
The best height for the tweeters is the height of your ears. You need to be in front of the speakers. Make sure you do not place any object between the monitor and you. It could decrease the quality of the high frequencies.



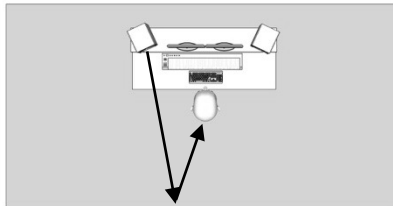
3. Place your HD5A along the shortest wall

If your room is a rectangle, place the monitors along the shortest wall. It will reduce the number of reflections coming from the rear wall.

In the example below, Position A is much better than Position B.



A



B

4. Last tips

- Avoid reflections from nearby hard surfaces. Windows, mixing desks or walls will reflect the sound coming from the monitors. You could do this by changing the placement or orientation of the speakers or by placing absorbent or diffusing materials.
- Do not place speakers too close to walls. Leave a distance of at least 20 cm (8") between the speakers and the rear wall and 1 m (39") between the speakers and the side walls.



Stagg

HD-5a

LF Amp. Power 60W HF Amp. Power 30W
Power supply ~100/120V 50/60Hz
 ~220/240V 50/60Hz

CAUTION
RISK OF ELECTRIC SHOCK
DO NOT OPEN

CE ETL US 346920

TIAL Serial No.

MADE IN CHINA

For more info and last updates:
staggmusic.com

Stagg®

