

Gold Tone[®]

MUSIC GROUP

Guitars - Banjos - Mandolins - Bases - Ukuleles - Folkternative Instruments



Billy Strings

ML-1 Missing Link Bela' Fleck Baritone Banjo

Gold Tone[®]

MANDO-GUITAR COLLECTION

pg. 12



F-6

6-String F-style
Mando-Guitar
w/ Pickup and Case



F-12

12-String F-style
Mando-Guitar
w/ Pickup and Case



A-6

6-String A-style
Mando-Guitar
w/ Case

Reuel Zavala (Morgan Leigh Band)
with his BG-150F



Table of Contents

For Guitarists

Resophonic Square Neck Guitars	9
Resophonic Round Neck Guitars	10
Banjitaras (6-String Banjos)	11
Manditaras (6-String Mandolins)	13
Tenor Guitars	14
Lap Steels	15
Weissenborns	16

For Bassists

Alternative Basses	17
MicroBasses	18

For Mandolinists

Alternative Mandolins	20
A and F-Style Mandolins	21
Electric Mandolins	22

For Uke Players

Little Gems	24
Wood & Metal Body Ukuleles	25
Banjo Ukuleles	26

For Banjoists

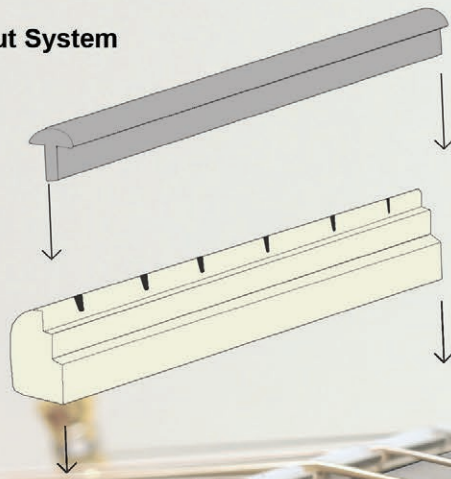
5-String Openbacks	28
AC-Series	31
5-String Resonators	32
Cripple Creek Banjos	39
Cello Banjos	43
Travelers & Minis	44
Long Necks	45
Dojo-Dlx & Banjola+	46
Electric	47
Irish Tenor	48
Plectrum & Tenor	49

Parts & Accessories

Factory Services & Parts List	51
Pickup Systems	52
Accessories	54
String Gauges & Tunings	56
String Packs	57
Cases & Gig Bags	58
About Us & Warranties	60
Gold Tone Artists	61

Advantages of the ZerO Glide Nut System

- Playability
- Improved Tuning Stability
- Improved Consistency of Tone
- The ZerO Glide is interchangeable with any standard nut without alteration to instrument
- Rapid installation of the ZerO Glide is simple and easy

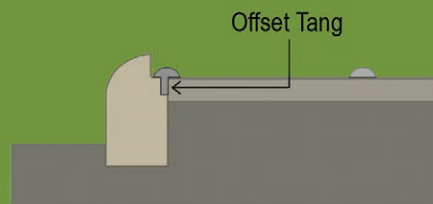
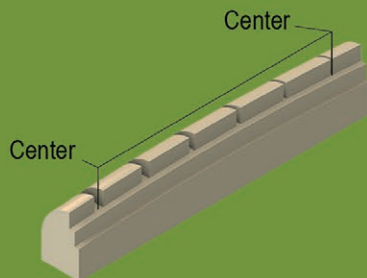


"I'm using a Zero Glide Fret that Wayne Rogers of Gold Tone is promoting. I tried it, and agreed it was an improvement on my banjo. I found it was a fuller sound. I'm a fan of that."

- Béla Fleck

ZERO GLIDE

Fretted Instrument Nut Replacement System



The Zero Glide Nut System improves upon the "zero-fret" concept by combining a specially-made nickel-silver fret with a patented bone nut that's designed for fitting into the stock nut slot of any fretted instrument. Zero Glide provides three frets of graduated heights to assure you perfect action at the first fret. This breakthrough system reduces contact between the string and the nut by 93% for greatly increased tuning stability by allowing the string to return to its original pitch following bends or aggressive playing techniques. An added benefit: open-string tone becomes the same as fretted-string tone! For more information, visit www.zeroglide.com



zeroglide.com

contact@zeroglide.com

800.826.5482

POPULAR PRODUCTS



PBS
PAUL BEARD
SQUARENECK
p. 9



OB-150
BLUEGRASS BANJO
BRASS TONE RING
p. 36



Mandocello
GUITAR STYLE BODY
W/ DUAL PICKUP SYSTEM
p. 19



CC-100R
CONVERTIBLE
RESONATOR BANJO
p. 39



MBass
SHORT SCALE BASS
W/ UPRIGHT SOUND
p. 18



SWIFT CAPO
FINISH IN BLACK, SILVER & COPPER
p. 54



Fitsall
STRINGED INSTRUMENT STAND
p. 54



SCT
SWIFT CLIP TUNER
p. 54



AC-1
ENTRY LEVEL
BANJO
p. 31



F-6
6 STRING MANDO-GUITAR
W/ PICKUP
p. 13



BU-1
BANJO UKULELE
W/ PICKUP
p. 25



GM-35
F-STYLE MANDOLIN
W/ CASE
p. 20



OB-3 Mastertone
PROFESSIONAL BANJO
NO HOLE TONE RING
p. 33

Folkternative

Same Tuning. New Sounds.

Our Folkternative instruments are tuned like traditional instruments, but open up a world of new tones. Change your sound, but use the same licks and chords you know and love.



Mandocello

For Mandolinists/Cellists
Tuning: CGDA
p. 19



EBM-5 Electric Banjo

For Banjoists
Tuning: gDGBD
p. 47



GT-750 Banjitar

For Guitarists
Tuning: EADGBE
p. 12



BZ-500

For Mandolinists
Tuning: GDAD
p. 20



F-6 Mandoguitar

For Guitarists
Tuning: EADGBE
p. 13



Resonator Ukulele

For Uke Players
Tuning: GCEA
p. 25



GME-4 Electric Mandolin

For Guitarists
Tuning: GDAE
p. 22



Quinton Gibson with his BZ-500

Gold Tone[®]

Folkternative



For Guitarists

pg. 9-16

Beard Resophonic Square Neck Guitars

Designed by legendary resonator guitar builder, Paul Beard, these signature model guitars are assembled in our USA shop. They provide an unmatched tone that's far superior to others in their price range. The Beard "open soundwell" body design uses genuine USA-made Beard cones and spiders. The square neck models are played in the lap steel style, and the round neck models are played like a conventional guitar.



HBAG



PBS-M

w/ case

PBS-D

w/ case

PBS

w/ case

PBS-8

w/ case

	PBS-M	PBS-D	PBS	PBS-8
Top	Solid Mahogany	Curly Maple	Mahogany	Mahogany
Back & Sides	Solid Mahogany	Curly Maple	Mahogany	Mahogany
Fingerboard	Ebony	Ebony	Rosewood	Rosewood
Bridge	Maple w/ Ebony Insert			
Inlay	Snowflake	Hearts & Flowers	Dot	Dot
Binding	Curly Maple	Maple	Cream ABS	Cream ABS
Nut Width	1-7/8" ZeroGlide Nut	1-7/8" ZeroGlide Nut	1-7/8" ZeroGlide Nut	2-7/16" ZeroGlide Nut
Cone & Spider	Genuine US Made Beard			
Tuners	Sealed Guitar-Style			
Pickups	Optional: Paul Beard/Fishman Active Pickup, Paul Beard/Fishman Passive Pickup or Fishman Nashville			
Scale Length	25"	25"	25"	25"
Weight	5.5 lbs.	5.5 lbs.	5.5 lbs.	5.9 lbs.
Tuning	GBDGBD	GBDGBD	GBDGBD	EGBDEGBD
Strings	.056w, .045w, .035w, .026w, .018, .016			.059w, .056w, .045w, .035w, .032w, .026w, .018, .016
Finish	Tobacco Sunburst / High Gloss			
Hardware	Chrome Plated			
Options	Lefty	Lefty	Lefty	Lefty
Hard Case	Included	Included	Included	Included
Bag	HBAG (Available)	HBAG (Available)	HBAG (Available)	HBAG (Available)

Beard Resophonic Round Neck Guitars

The acoustical physics of resonator guitars differ from those of the soundboard acoustic guitar. The resonator's wood body vibrates much less and acts more like a loudspeaker enclosure, directing and shaping the vibrations from the resonator cone. The cone should be as thin as possible to produce maximum volume and tone, without collapsing from string tension. Beard cones are hand-spun in Maryland, using the original Dopyera brothers' lathe. The method of casting the spider bridge also effects tone. The temperature of the aluminum during casting must be closely monitored for the final spider to have the best tone.



HBAG

PBR-CA

w/ case

PBR-D

w/ case

PBR

w/ case

GRE

GRS

	PBR-CA	PBR-D	PBR	GRE	GRS
Top	Solid Mahogany	Curly Maple	Mahogany	Steel	Steel
Back & Sides	Solid Mahogany	Curly Maple	Mahogany	Steel (2.125" Thin)	Steel (3.125" Thick)
Fingerboard	Ebony	Ebony	Rosewood	Rosewood	Rosewood
Bridge	Maple w/ Ebony Insert				
Inlay	Snowflake	Hearts & Flowers	Dot	Snowflake	Dot
Binding	Curly Maple	Maple	Cream ABS	Curly Maple	Cream ABS
Nut Width	1-3/4" ZeroGlide Nut	1-3/4" ZeroGlide Nut	1-3/4" ZeroGlide Nut	1-3/4"	1-3/4"
Cone & Spider	Genuine US Made Beard			Cone & Biscuit Style	
Tuners	Sealed Guitar-Style				
Pickups	Optional: Paul Beard Active Pickup, Paul Beard Passive Pickup or Fishman Nashville			Magnetic Lipstick Pickup	Optional: Beard/Fishman Biscuit
Scale Length	25"	25"	25"	25"	25"
Weight	6.2 lbs.	6.2 lbs.	6.2 lbs.	9 lbs.	9.5 lbs.
Tuning	EADGBE	EADGBE	EADGBE	EADGBE	EADGBE
Strings	.054w, .045w, .035w, .024w, .016, .012				
Finish	Tobacco Sunburst / High Gloss			Textured	
Hardware	Chrome Plated				
Options		Lefty	Lefty	Lefty	Lefty
Hard Case	Included	Included	Included	HDRD-M (Available)	HDRD (Available)
Bag	HBAG (Available)	HBAG (Available)	HBAG (Available)	HBAG (Available)	HBAG (Available)

Banjitar

Folkternative Instruments

Popular during the early twentieth century, guitar banjos practically disappeared by the fifties. They came back strong in 1996, as Gold Tone coined the term "banjitar" to better define the breed. Now, everyone says BANJITAR! Gold Tone offers several different models. We are the "go to" maker for unique acoustic and electric models that are suited for all musical styles.



HDE ES-Banjitar

EB-6
w/ bag

BT-1000
w/ bag

HD-15M

WR-7
w/ bag

	ES-Banjitar	EB-6	BT-1000	WR-7
Tone Ring	8" Aluminum		12" Rolled Brass Flat Bar	12" Rolled Brass Flat Bar
Rim			12" 3-Ply Maple	12" Multi-Ply Maple
Neck	Maple	Maple	Maple	Maple
Tension Hoop	Top Tension-Style		12" Flat Bar	12" Flat Bar
Tuners	Sealed Guitar-Style	Sealed Guitar-Style	Sealed Guitar-Style	Sealed Guitar-Style
Tailpiece	Straightline	Terminator	Terminator	Terminator
Resonator			Optional: 14" Mahogany	
Arm Rest		Contour Body	Gold Tone Engraved	Curly Maple Armrest
Fingerboard	Radiused Rosewood	Radiused Rosewood	Radiused Rosewood	Radiused Rosewood
Inlay	Snowflake	Dot	Dot	Dot & Cloud
Truss Rod	Two-Way Adjustable	Two-Way Adjustable	Two-Way Adjustable	Two-Way Adjustable
Nut Width	1-11/16" ZeroGlide Nut	1-11/16" ZeroGlide Nut	1-11/16" ZeroGlide Nut	1-7/8" ZeroGlide Nut
Pickup	Stacked Humbucker at Neck, SMP Humbucker Under Head	Humbucker	SMP+	SMP+ Humbucker
Head	8" Remo HC Smooth	8" Remo PTS	12" Remo LC Renaissance	12" Remo LC Renaissance
Scale Length	25-1/2"	25-1/2"	25-1/2"	25-1/2"
Weight	8 lbs.	6 lbs.	7 lbs.	7.5 lbs.
Tuning	EADGBE	EADGBE	EADGBE	EEADGBE
Strings	.052W, .042W, .032W, .020W, .016, .010			.011, .052W, .042W, .032W, .020W, .013, .010
Finish	Tobacco Sunburst / High Gloss	Natural / Satin	Natural / High Gloss	Vintage Brown / Satin
Plating	Chrome Plated	Black Anodized / Chrome Plated	Chrome Plated	Chrome Plated
Options			Lefty	
Hard Case	HDE (Available)	HD15-M (Available)	HD15-M (Available)	HD15-M (Available)
Bag		Included	Included	Included

Banjitar

Folkternative Instruments

More Country, Rock, and Folk artists use our Banjitaras than any other brand. Some of the artists using the Gold Tone banjitaras include Bruce Springsteen, Kid Rock, and Melissa Ethridge. The scale length used on our Banjitaras is that of the average standard guitar, unlike most others who use a banjo scale, making them more comfortable to play for the guitarist. Banjitaras are our most popular Folkternative instruments.



GT-750	GT-500	CC-Banjitar	AC-6+
11" 20-Hole Bell Brass	11" Steel Alloy	11" Rolled Brass Flat Bar	
11" Multi-Ply Maple	11" Multi-Ply Maple	11" Multi-Ply Maple	11" Composite
Maple	Maple	Maple	Maple
11" Notched	11" Notched	11" Flat Bar	11" Flat Bar
Sealed Guitar-Style	Sealed Guitar-Style	Sealed Guitar-Style	Sealed Guitar-Style
Straightline	Straightline	Terminator	Terminator
13" Curly Maple	13" Maple	13" Maple	13" Composite
Gold Tone Engraved	Gold Tone Engraved	Gold Tone Engraved	Gold Tone Engraved
Radiused Rosewood	Radiused Rosewood	Radiused Rosewood	Radiused Rosewood
Snowflake	Snowflake	Dot	Dot
Two-Way Adjustable	Two-Way Adjustable	Two-Way Adjustable	Two-Way Adjustable
1-11/16" ZeroGlide Nut	1-11/16" ZeroGlide Nut	1-11/16" ZeroGlide Nut	1-11/16" ZeroGlide Nut
SMP w/ Volume Control	SMP w/ Volume Control	SMP+	SMP w/ Volume Control
11" Remo HC Clear	11" Remo HC Smooth	11" Remo LC Smooth	11" Remo LC Smooth
25-1/2"	25-1/2"	25-1/2"	25-1/2"
11.5 lbs.	11 lbs.	7 lbs.	6 lbs.
EADGBE	EADGBE	EADGBE	EADGBE
.052w, .042w, .032w, .020w, .016, .010			
Natural / High Gloss	Natural / High Gloss	Vintage Brown / Satin	Natural / Satin
Chrome Plated	Chrome Plated	Chrome Plated	Chrome Plated
Lefty	Lefty	Lefty	Lefty
Included	HD15 (Available)	HD15 (Available)	HD15 (Available)
HPB (Available)	HPB (Available)	Included	Included

Guitar Mandolins & Micro Guitar

Folk Alternative Instruments

Because our Gold Tone family is filled with guitarists of all styles, we personally love adding to our line of folk-alternative guitars. The mandolin-style bodies have an increased scale length to give players more room for their left hand. The Micro Guitar is a perfect addition for travelers, children, and practicing. We used our Microbass body with an ergo-glide top and included a Zeroglide nut so you can play comfortably for hours.



F-12
w/ case

F-6
w/ case

A-6
w/ bag

GME-6
w/ bag

M-Guitar
w/ bag

	F-12	F-6	A-6	GME-6	Micro Guitar
Top	Solid Spruce	Solid Spruce	Solid Spruce	Alder	Solid Spruce
Back & Sides	Maple	Maple	Maple	Alder	Okoume
Neck	Maple	Maple	Maple	Maple	Nato
Fingerboard	Radiused Rosewood	Radiused Rosewood	Radiused Rosewood	Maple	Walnut
Bridge/Saddle	Adjustable Bridge	Adjustable Bridge	Adjustable Bridge	Compensated Metal	Ebony w/ Bone Saddle
Inlay	Dot	Dot	Dot	Dot	Dot
Binding	Cream ABS	Cream ABS	Cream ABS		
Tailpiece	Trapeze	Trapeze	Trapeze		
Truss Rod	Two-Way Adjustable	Two-Way Adjustable	Two-Way Adjustable	Two-Way Adjustable	Two-Way Adjustable
Nut Width	1-7/8" ZeroGlide Nut	1-3/4" ZeroGlide Nut	1-13/16" ZeroGlide Nut	1-11/16" ZeroGlide Nut	1-11/16" ZeroGlide Nut
Tuners	Kluson-Style	Open Gear Guitar-Style	Open Gear Guitar-Style	Sealed Guitar-Style	Sealed Guitar-Style
Pickups	Bridge Mounted Transducer	Bridge Mounted Transducer	Bridge Mounted Transducer	Dual-Rail Stacked Humbucker	Transducer Pickup
Scale Length	15"	15"	15"	13-7/8"	22-3/4"
Weight	2.5 lbs.	2.4 lbs.	2 lbs.	4.4 lbs.	2.8 lbs.
Tuning	EEAADDGGBBEE	EADGBE	EADGBE	EADGBE	EADGBE
Strings	.042w, .032w, .024w, .018, .012, .008, .018, .014, .010, .018, .012, .008	.042w, .032w, .024w, .018, .012, .008		.052w, .042w, .032w, .020w, .013, .010	.054w, .045w, .035w, .024, .016, .012
Finish	Tobacco Sunburst / Satin	Tobacco Sunburst / Satin	Tobacco Sunburst / Satin	Cream / High Gloss	Natural / Satin
Hardware	Chrome Plated	Chrome Plated	Chrome Plated	Chrome Plated	Chrome Plated
Options				Lefty	Lefty
Hard Case	Included Hard Foam	Included Hard Foam			
Bag			Included	Included	Included

Tenor Guitars

Gold Tone is the only company providing professional quality tenor guitars at an affordable price. Tenors are rapidly increasing in popularity and are great as alternative instruments for guitarists or tenor banjo players. Tenors are normally tuned in fifths (CGDA), but can be tuned to Chicago tuning (DGBE) for guitarists.



	TG-18	TG-10
Top	Solid Sitka Spruce	Spruce
Back & Sides	Mahogany	
Neck	Mahogany	
Fingerboard	Ebony	Rosewood
Bridge	Ebony w/ Bone Saddle	
Inlay	Mini-Dot	
Binding	Black ABS	
Truss Rod	Two-Way Adjustable	
Nut Width	1-5/16" ZeroGlide Nut	
Tuners	Kluson-Style	
Pickups	Optional: Transducer	
Scale Length	23"	
Weight	5 lbs.	
Tuning	CGDA	
Strings	.035w, .024w, .014, .008	
Finish	Natural / High Gloss	
Hardware	Chrome Plated	
Options	Lefty	
Hard Case	HDRD (Available)	
Bag	Included	

Lap Steel Guitars



AJ Ghent

In the lap steel's heyday (the 1930's-1950's), the Oahu Tonemaster® was the instrument of choice among professionals. Our LS is a vintage-style replica of this famous instrument with identical pickup design and hardware.

LS-8 & LS-6

Top	Mahogany
Back & Sides	Mahogany
Neck	Maple
Tuners	Kluson-Style
Binding	Cream ABS
Fingerboard	Rosewood
Inlay	Dot
Nut Width	2-3/8" ZeroGlide Nut & 2" ZeroGlide Nut
Pickups	Soapbar
Scale Length	25"
Weight	6.2 lbs. & 6 lbs
LS-8 Strings	.070w, .052w, .042w, .035w, .030w, .024w, .016, .012
LS-8 Tuning	DFACDFAC
LS-6 Strings	.056w, .044w, .034w, .026w, .018, .014
LS-6 Tuning	DADF#AD
Finish	Two Tone Tobacco Sunburst / High Gloss
Plating	Chrome Plated
Options	Lefty
Hard Case	Included
Bag	HBLS (Available)



HBLS

HDLS

LS-8
w/ case

LS-6
w/ case

Weissenborn®

Folkternative Instruments



Weissenborns are Hawaiian guitars with raised strings, flush frets and a hollow neck. These beauties have a distinctive woody sound, astounding volume, sweet sustain, and deep warm tone.

	SM+ Weissenborn	GT-WB Weissenborn
Top	Solid Mahogany	Sapele
Back & Sides	Mahogany	Sapele
Fingerboard	Select Wood	Walnut
Bridge	Ebony w/ Bone Saddle	Ebony w/ Bone Saddle
Inlay	Traditional	Dot
Binding	Rope Mahogany/Maple	Cream ABS
Nut Width	1-15/16" ZeroGlide Nut	1-15/16" ZeroGlide Nut
Tuners	Kluson-Style	Open Gear Guitar-Style
Pickups	Optional: Trilogy (DMT) Weissenborn (WBM)	
Scale Length	24-3/4"	24-3/4"
Weight	5.2 lbs.	5.2 lbs.
Tuning	DADF#AD	
Strings	.056w, .044w, .034w, .026w, .018, .014	
Finish	Natural / High Gloss	Natural / Satin
Hardware	Gold Plated	Chrome Plated
Options	Lefty	Lefty
Hard Case	Included	HDW (Available)
Bag	HBAG (Available)	Included



SM+
w/ case



GT-WB
w/ bag

For Bassists

pg. 17-18



John Ferrara
with his BB-400+

Bass Guitars

Folk Alternative Instruments

Gold Tone's low-voice section includes our alternative basses: the PBB Paul Beard Reso Bass and the BB-400+ Banjo Bass (played by Victor Wooten). Both can be played acoustically or amplified through the built-in pickups.



PBB
w/ case



BB-400+
w/ case

	PBB	BB-400+
Top / Head	Mahogany	14" Remo HC Renaissance
Back & Sides / Rim	Mahogany	14" 3-Ply Maple
Neck	Maple	Maple
Fingerboard	Rosewood	Rosewood
Bridge	Maple w/ Ebony Cap	Maple w/ Ebony Cap
Inlay	Dot	Snowflake
Binding	Cream ABS	Cream ABS / Black ABS
Truss Rod	Two-Way Adjustable	Two-Way Adjustable
Nut Width	1-5/8" ZeroGlide Nut	1-3/4" ZeroGlide Nut
Tuners	Sealed Bass-Style	Sealed Bass-Style
Pickups	Humbucking Pickup w/ Tone and Volume Control	SMP w/ Volume Control
Scale Length	32"	32"
Weight	8 lbs.	9.6 lbs.
Tuning	EADG	EADG
Strings	.096w, .076w, .056w, .040w	.105w, .080w, .065w, .046w
Finish	Tobacco Sunburst / High Gloss	Natural / High Gloss
Hardware	Chrome Plated	Chrome Plated
Options	Lefty	Lefty
Hard Case	Included	Included

MicroBass *Folkternative Instruments*

These next generation of micro-scale basses deliver convincing contrabass sound in a compact instrument that is sure to satisfy professional live performances and studio needs at an entry-level price. This instrument is perfect for everyone.



HDMI25/23



MBass25 & MBassFL25
w/ bag

MBass & MBassFL
w/ bag

MEBass & MEBassFL
w/ bag

MicroBass Accessories



MBS: MBass Strings
Rubber/Polymer made



MBLNS: 'Silverback'
Silver-Wrapped Nylon
Strings by LaBella



MBLB: MBass
Strings
Flat wound stain-



MBTR: Thumbrest
Spring clip designed
for bass soundholes

M-Bass25 & M-Bass25FL

M-Bass & M-BassFL

ME-Bass & ME-BassFL

Top	Mahogany	Mahogany	Mahogany
Back & Sides	Okoume	Okoume	Mahogany
Bridge	Walnut	Walnut	Ebony
Fingerboard	Walnut	Walnut	Rosewood
Neck	Nato	Nato	Mahogany
Inlay	Dot	Dot	Dot
Tuners	Butterfly Bass-Style	Butterfly Bass-Style	Butterfly Bass-Style
Fret Markers	Dot	Dot	Dot
Nut Width	1-11/16" Bone	1-11/16" Bone	1-11/16" Bone
Pickups	MBass Preamp w/ EQ		
Scale Length	25"	23"	23"
Weight	3.2 lbs.	2.8 lbs.	5.5 lbs.
Strings	Aquila MicroBass Rubber/Polymer Strings	Aquila MicroBass Rubber/Polymer Strings	Aquila MicroBass Rubber/Polymer Strings
Tuning	EADG	EADG	EADG
Finish	Natural / Satin	Natural / Satin	Natural / Satin
Hardware	Black	Black	Black
Options	Lefty	Lefty	Lefty
Hard Case	HDMI25 (Available)	HDMI23 (Available)	
Bag	Included	Included	Included

For Mandolinists

pg. 19-22



Killian & the Comeback Kids

	Mandocello
Top	Solid Spruce
Back & Sides	Maple
Fingerboard	Rosewood
Bridge/Saddle	Adjustable Bridge
Inlay	Dot
Binding	Cream ABS
Tailpiece	Pakka w/ Metal String Retainer
Truss Rod	Two-Way Adjustable
Nut Width	1-1/2" ZeroGlide Nut
Tuners	Sealed Guitar-Style
Pickups	Magnetic Pickup & Bridge Transducer w/ Volume Control & Blend Knob
Scale Length	24-7/8"
Weight	6.25 lbs.
Tuning	CCGGDDAA
Strings	.070w, .044w, .034w, .020w (Doubled)
Finish	Tobacco Sunburst / High Gloss
Hardware	Chrome Plated
Hard Case	Included



Mandocello w/ case

The Gold Tone Mandocello is by far the least expensive instrument of its type available from ANY manufacturer, but it boasts deluxe features not offered anywhere else. These include the patented Zero Glide nut and a Venetian-style cut-away body. The Mandocello also features a dual pickup system, which includes a jazz-style floating humbucker pickup, and a transducer pickup in the bridge (with a volume control knob and a knob for blending the two pickups), providing a superb plugged-in tone. The Mandocello has maple back and sides and a solid spruce top and is fitted with an adjustable ebony bridge, an ebony tailpiece and a two-way adjustable truss rod. The Mandocello continues the expansion of Gold Tone's innovative "Folkternative" initiative, aimed squarely at providing amateur and professional players with the widest selection of plucked instruments in the world at an affordable price.

Alternative Mandolins

Folkternative Instruments

Any of these 8-stringed instruments can easily be played by a mandolinist or violinists. Bowed-instrument players feel at home on them because they're tuned in fifths; the fingering is the same and they provide exciting new sounds. All of these 8-stringers are exploding in popularity and are great examples of Folkternative voices for mandolinists.



BZ-1000
w/ case

BZ-500
w/ case

OM-800+
w/ case

Mandola
w/ bag

MB-850+
w/ bag

	BZ-1000 Bouzouki	BZ-500 Bouzouki	OM-800+ Octave Mandolin	Mandola	MB-850+ Mandolin Banjo
Top / Head	Solid Spruce	Solid Spruce	Arched Solid Spruce	Solid Spruce	11" Remo LC Coated Topside
Back & Sides / Rim	Mahogany	Mahogany	Mahogany	Mahogany	11" Multi-Ply Maple Rim / 13" Maple Resonator
Neck	Mahogany	Mahogany	Mahogany	Mahogany	Maple
Fingerboard	Rosewood	Rosewood	Radiused Rosewood	Rosewood	Rosewood
Bridge/Saddle	Ebony w/ Bone Saddle	Adjustable Bridge	Adjustable Bridge	Ebony w/ Bone Intonated	Maple w/ Ebony Cap
Inlay	Snowflake	Snowflake	Dot	Snowflake	Dot
Binding	Black ABS		Cream ABS	Black ABS	
Tailpiece		Mandolin Cast	Mandolin Cast	Mandolin Cast	No-Knot
Truss Rod	Two-Way Adjustable	Two-Way Adjustable	Two-Way Adjustable	Two-Way Adjustable	
Nut Width	1-3/8" ZeroGlide Nut	1-3/8" ZeroGlide Nut	1-1/4" ZeroGlide Nut	1-1/4" ZeroGlide Nut	1-3/32" ZeroGlide Nut
Tuners	Sealed Guitar-Style	Sealed Guitar-Style	Sealed Guitar-Style	Sealed Guitar-Style	Open Gear Guitar-Style
Pickups	Fishman Undersaddle w/ Preamp	Optional: Baggs "Radius"	Passive Under Saddle	Optional: Baggs "Radius"	Optional: SMP+
Scale Length	24-3/4"	26-1/4"	22-1/2"	17-1/16"	13-7/8"
Weight	4.5 lbs.	4 lbs.	4.5 lbs.	3 lbs.	6.3 lbs.
Tuning	GGDDAADD	GGDDAADD	GDAE	CGDA	GDAE
Strings	.016, .016, .020, .020, .035w, .016, .045w, .020	.012, .012, .020, .020, .035w, .013, .045w, .018	.050w, .035w, .024w, .016, (Doubled)	.050w, .035w, .020w, .016 (Doubled)	.040w, .026w, .016, .011 (Doubled)
Finish	Natural / High Gloss	Natural / High Gloss	Natural / High Gloss	Natural / High Gloss	Vintage Brown / High Gloss
Hardware	Chrome Plated	Chrome Plated	Gold Plated	Chrome Plated	Chrome Plated
Options	Lefty	Lefty	Lefty	Lefty	Lefty
Hard Case	Included	Included	Included		
Bag		HBB (Available)	HBTR (Available)	Included	Included

A-Style and F-Style Mandolins

This solid-top A-style mandolin evokes the hugely popular instruments played by thousands of mandolin enthusiasts in clubs and orchestras during the early twentieth century. The F-Style mandolins are the most popular in the bluegrass world as they generate a bright and aggressive tone. Because of their shape, they produce the well-known percussive “chunk” sound used in fast-paced songs. The Zero Glide upgraded nut makes these some of the easiest playing mandolins available.



HDMA



GM-50+
w/ bag



HDM

HBM GM-70+



GM-35
w/ case



Francelle Maria

	GM-70+	GM-35
Top	Solid Spruce	Spruce
Back & Sides	Curly Maple	Maple
Neck	Maple	Maple
Fingerboard	Ebony	Radiused Ebony
Bridge	Adjustable Bridge	Adjustable Ebony Bridge
Inlay	Dot	Traditional
Binding	Cream ABS	Cream ABS
Tailpiece	Mandolin Cast	Traditional w/ Cover
Truss Rod	Two-Way Adjustable	Two-Way Adjustable
Nut Width	1-1/8" ZeroGlide Nut	1-1/8" ZeroGlide Nut
Tuners	A-Style	F-Style
Pickups	Chop Saddle Pickup	Optional: L.R. Baggs "Radius"
Scale Length	13-3/4"	13-3/4"
Weight	2.4 lbs.	2.8 lbs.
Tuning	GDAE	GDAE
Strings	.040w, .026w, .016, .011 (Doubled)	.040w, .026w, .016, .011 (Doubled)
Finish	Tobacco Sunburst / High Gloss	Tobacco Sunburst / High Gloss
Hardware	Chrome Plated	Gold Plated
Options	Lefty	Lefty
Hard Case	HDMA (Available)	Included Hard Foam
Bag	Included	HBM (Available)

Alain Johannes
Queens of the Stone Age
Them Crooked Vultures
solo work



GME-4 Electric

GME-5 Electric

	GME-4 Electric	GME-5 Electric
Top	Alder	Alder
Back & Sides	Alder	Alder
Neck	Maple	Maple
Fingerboard	Maple	Maple
Bridge	Compensated Metal	Compensated Metal
Inlay	Dot	Dot
Binding		
Tailpiece		
Truss Rod	Two-Way Adjustable	Two-Way Adjustable
Nut Width	1-1/16" ZeroGlide Nut	1-5/16" ZeroGlide Nut
Tuners	Sealed Guitar-Style	Sealed Guitar-Style
Pickups	Dual-Rail Stacked Humbucker	Dual-Rail Stacked Humbucker
Scale Length	13-7/8"	13-7/8"
Weight	3.4 lbs.	4 lbs.
Tuning	GDAE	CGDAE
Strings	.040w, .026w, .016, .011	.052w, .040w, .026w, .016, .011
Finish	Cream / High Gloss	Cream / High Gloss
Hardware	Chrome Plated	Chrome Plated
Options	Lefty	Lefty
Hard Case		
Bag	Included	Included

Electric Mandolins

The solid-body electric mandolin is great for Texas swing, folk, jazz, and even rock n' roll. For the mandolinist seeking an extended range, the 5-string electric will surely open a world of possibilities to the adventurous player.



GME-4
w/ bag

GME-5
w/ bag



For Uke Players

pg. 24-26

Thomas Benjamin Wild Esq

Little Gem by Gold Tone®

Transparent Banjo Ukulele



Winner of the “Best in Show” award at Summer NAMM, these Little Gem Banjo Ukes feature a composite see-through plastic rim and resonator and are available in 4 “gem” colors (Diamond, Ruby, Sapphire, and Amethyst). The Little Gems also have a maple neck, penetrating tone, and sealed tuners. All models include a gig bag.



	Little Gem (Diamond)	Little Gem (Amethyst)	Little Gem (Sapphire)	Little Gem (Ruby)
Rim	8" Acrylic			
Tension Hoop	8" Rolled Brass Flat Bar			
Neck	Maple			
Tuners	Sealed Guitar-Style			
Tailpiece	Banjo Uke Style			
Resonator	Acrylic			
Arm Rest	Optional (See Miner's Kit below)			
Fingerboard	Maple			
Inlay	Dot & Star			
Truss Rod	Two-Way Adjustable			
Nut Width	1-3/8" Bone			
Bridge	Maple w/ Ebony Cap			
Head	8" LC Clear			
Scale Length	15" Concert			
Weight	2.63 lbs			
Tuning	GCEA			
Strings	.025, .036, .030, .023			
Finish	Clear	Purple	Blue	Red
Hardware	Chrome Plated			
Options	Lefty / Lights	Lefty / Lights	Lefty	Lefty
Bag	Included			



LG-D w/ bag
LG-A w/ bag
LG-S w/ bag
LG-R w/ bag
LGLT-D LED Light Up w/ bag
LGLT-A LED Light Up w/ bag



Little Gem POP box



The Little Gem Miner's Kit (sold separately) includes:



Armrest



Strings



Polishing Cloth



Clip-On Tuner



Strap

BU-1 & Resonator Ukuleles

BU-1

Rim	8" Multi-Ply Maple
Tension Hoop	8" Rolled Brass Flat Bar
Neck	Maple
Tuners	Open Gear Guitar-Style
Tailpiece	Vintage Style
Fingerboard	Rosewood
Inlay	Dot
Nut Width	1-3/16" ZeroGlide Nut
Bridge	Maple w/ Ebony Cap
Head	8" Remo LC Fiberskyn
Pickup	Hot Dot Pickup
Scale Length	15-5/8" Concert
Weight	2.75 lbs.
Tuning	GCEA
Strings	.025, .036, .030, .023
Finish	Vintage Brown / Satin
Hardware	Chrome Plated
Options	Lefty
Bag	Included



BU-1 w/ bag

Pickers can't get enough of our banjo-ukes! This openback concert scale instrument has an eight inch maple pot crowned with a genuine Remo® Fiberskyn head, a hard maple neck, a graceful vintage-style tailpiece, our patented Zero Glide nut and Aquila strings. The BU-1 also comes equipped with the Hot Dot pickup for easy amplification.

ResoMaple Concert/Tenor

ResoUke Concert/Tenor

Top	Curly Maple	Brass
Back & Sides	Curly Maple	Brass
Neck	Mahogany	Mahogany
Fingerboard	Rosewood	Rosewood
Saddle	Maple	Maple
Inlay	Dot	Dot
Binding	Cream ABS	Cream ABS
Nut Width	1-3/8" Bone	1-3/8" Bone
Tuners	Kluson-Style	Kluson-Style
Pickups	Optional: Under Saddle Transducer	Optional: Under Saddle Transducer
Scale Length	14" / 17"	14" / 17"
Weight	2 lbs	2.5 lbs.
Tuning	GCEA	GCEA
Strings	.025, .036, .030, .023	.025, .036, .030, .023
Finish	Natural / Satin	Brushed Aluminium
Hardware	Brushed Aluminium / Chrome Plated	Brushed Aluminium / Chrome Plated
Options	Lefty	Lefty
Bag	Included	Included



ResoMaple w/ bag

ResoUke w/ bag

The ResoMaple has a biscuit-style cone, with a gorgeous flamed maple wood body that provides a crisp, loud tone.

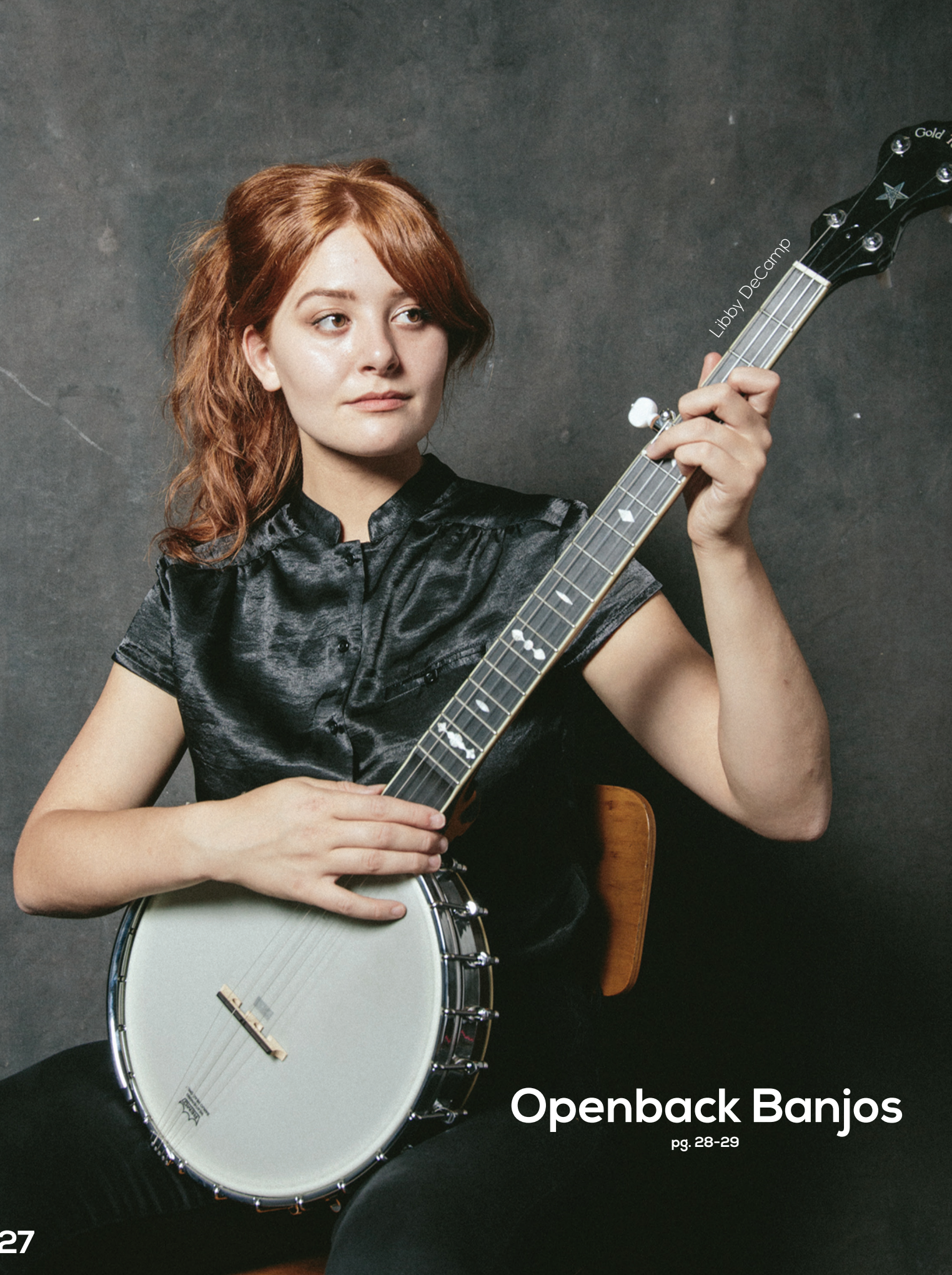
The ResoUke features the same biscuit-style cone that produces a great tone while the brush-finished brass body amplifies the volume.

Banjo Ukuleles

Made popular by British sensation George Formby to accompany his comical songs, the banjo ukulele brings a new tone to the ukulele world. These instruments have a ukulele style neck attached to a banjo body and they are available with or without a resonator. The banjo body is kept small to accentuate the higher-pitched tones of the ukulele, while still providing the plunk of a banjo. Many artists have included the banjolele in their arsenals, such as George Harrison, Brian May and Béla Fleck. In 2010, Gold Tone created the BU-line in order to offer all the voices in the ukulele choir at affordable prices.



	Banjolele Dlx	Banjolele	BUB	BUT	BUC	BUS
Tone Ring	8" Rolled Brass Flat Bar	8" Rolled Brass Flat Bar				
Rim	8" Multi-Ply Maple	8" Multi-Ply Maple	8" Multi-Ply Maple	8" Multi-Ply Maple	8" Multi-Ply Maple	8" Multi-Ply Maple
Tension Hoop	8" Flat Bar	8" Flat Bar	8" Flat Bar	8" Flat Bar	8" Flat Bar	8" Flat Bar
Flange	One Piece Cast					
Neck	Maple	Maple	Maple	Maple	Maple	Maple
Tuners	Open Gear Guitar-Style	Open Gear Guitar-Style	Open Gear Guitar-Style	Open Gear Guitar-Style	Open Gear Guitar-Style	Open Gear Guitar-Style
Tailpiece	Banjo Uke Style	Banjo Uke Style	Banjo Uke Style	Banjo Uke Style	Banjo Uke Style	Banjo Uke Style
Resonator	10" Mahogany		Maple Flat Back	Maple Flat Back	Maple Flat Back	Maple Flat Back
Arm Rest	Vintage-Style	Vintage-Style				
Fingerboard	Ebony	Ebony	Rosewood	Rosewood	Rosewood	Rosewood
Inlay	Snowflake	Snowflake	Mini Dot	Mini Dot	Mini Dot	Mini Dot
Truss Rod			Two-Way Adjustable	Two-Way Adjustable		
Nut Width	1-3/8" ZeroGlide Nut	1-3/8" ZeroGlide Nut	1-3/8" ZeroGlide Nut	1-3/8" ZeroGlide Nut	1-3/8" ZeroGlide Nut	1-3/8" ZeroGlide Nut
Bridge	Maple w/ Ebony Cap	Maple w/ Ebony Cap	Maple w/ Ebony Cap	Maple w/ Ebony Cap	Maple w/ Ebony Cap	Maple w/ Ebony Cap
Head	8" Remo MC Smooth	8" Remo MC Smooth	8" Remo MC Smooth	8" Remo MC Smooth	8" Remo MC Smooth	8" Remo MC Smooth
Scale Length	15-1/2" Concert	15-1/2" Concert	19" Baritone	17" Tenor	15-1/2" Concert	13-1/2" Soprano
Weight	5 lbs.	4 lbs.	3 lbs.	2.10 lbs	2.8 lbs	2.6 lbs.
Tuning	GCEA	GCEA	DGBE	GCEA	GCEA	GCEA
Strings	.025, .036, .030, .023	.025, .036, .030, .023	.035W, .036, .030, .023	.025, .036, .030, .023	.025, .036, .030, .023	.025, .036, .030, .023
Finish	Vintage Brown / High Gloss	Vintage Brown / High Gloss	Vintage Brown / Satin	Vintage Brown / Satin	Vintage Brown / Satin	Vintage Brown / Satin
Hardware	Chrome Plated	Chrome Plated	Chrome Plated	Chrome Plated	Chrome Plated	Chrome Plated
Options	Lefty	Lefty	Lefty	Lefty	Lefty	Lefty
Hard Case	HDBX (Available)		Included	Included	Included	Included
Bag	Included	Included				



Libby DeCamp

Openback Banjos

pg. 28-29

OpenBacks

Due to a resurgence of interest in Old Time music, the openback banjo's popularity has been growing rapidly. Gold Tone offers the widest selection of openbacks of ANY company today. Our models are designed with specific vintage-style tone rings, scooped fingerboards and Old Time styling.



	OT-800	CB-100	WL-250	MM-150
Tone Ring	11" 32-Hole Tubaphone-Style	11" Rolled Brass Flat Bar	11" White Ladye	11" White Ladye
Rim	11" 3-Ply Maple Tubaphone-Style w/ Bracket Band	11" 3-Ply Maple w/ Faux Dowel	11" 3-Ply Maple	11" 3-Ply Maple
Tension Hoop	11" Notched	11" Notched	11" Notched	11" Notched
Neck	Maple	Maple	Maple	Maple
Tuners	GT Master Planetary	GT Planetary	GT Master Planetary	GT Planetary
Tailpiece	No Knot	No Knot	No Knot	No Knot
Arm Rest	Vintage-Style	Vintage-Style	Vintage-Style	Vintage-Style
Fingerboard	Ebony w/ Scoop	Rosewood w/ Scoop	Ebony w/ Scoop	Rosewood w/ Scoop
Inlay	Old-Time	Dot w/ Shooting Star	Cloud	Snowflake
Truss Rod	Two-Way Adjustable	Two-Way Adjustable	Two-Way Adjustable	Two-Way Adjustable
Nut Width	1-3/16" ZeroGlide Nut	1-3/16" ZeroGlide Nut	1-3/16" ZeroGlide Nut	1-3/16" ZeroGlide Nut
Bridge	Maple w/ Ebony Cap	Maple w/ Ebony Cap	Maple w/ Ebony Cap	Maple w/ Ebony Cap
Head	11" Remo HC Renaissance	11" Remo HC Fiberskyn	11" Remo HC Renaissance	11" Remo HC Renaissance
Scale Length	26-3/16"	26-3/16"	26-3/16"	26-3/16"
Weight	8 lbs.	6 lbs.	6.7 lbs.	6.5 lbs.
Tuning	GDGBD	GDGBD	GDGBD	GDGBD
Strings	.011, .024w, .016, .013, .011	.011, .024w, .016, .013, .011	.011, .024w, .016, .013, .011	.011, .024w, .016, .013, .011
Finish	Vintage Brown / High Gloss	Vintage Brown / High Gloss	Vintage Brown / High Gloss	Natural / High Gloss
Plating	Chrome Plated	Chrome Plated	Chrome Plated	Chrome Plated
Options	SMP+ Pickup / Lefty	Lefty	SMP+ Pickup / Lefty	SMP+ Pickup / Lefty
Hard Case	Included	HD14 (Available)	Included	Included
Bag	HPBO (Available)	Included	HPBO (Available)	HPBO (Available)

Bob Carlin Signature 12" Series

Ten years ago, Bob Carlin and Wayne Rogers designed a signature model to meet Bob's specifications. They chose a 12" rim to bring out the lower tones, a scooped neck to help produce that Old Time "cluck", and a mock dowel stick to fit the old-time style.



HPB



HD15-M

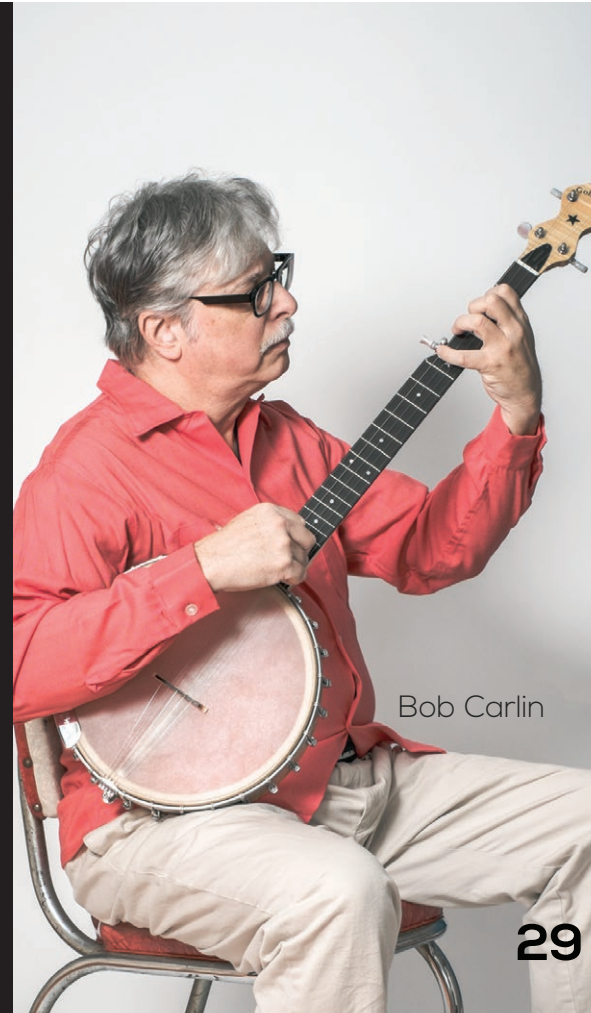


BC-350
w/ case



CC-Carlin12
w/ bag

	BC-350	CC-Carlin12
Tone Ring	12" Rolled Brass Flat Bar	12" Rolled Brass Flat Bar
Rim	12" 3-Ply Maple w/ Faux Dowel	12" Multi-Ply Maple
Tension Hoop	12" Notched	12" Flat Bar
Neck	Maple	Maple
Tuners	GT Master Planetary	GT Planetary
Tailpiece	No Knot	Vintage Style
Arm Rest	Hot Dog	Gold Tone Engraved
Fingerboard	Ebony w/ Scoop	Rosewood w/ Scoop
Inlay	Dot & Star	Dot & Star
Truss Rod	Two-Way Adjustable	Two-Way Adjustable
Nut Width	1-3/8" ZeroGlide Nut	1-3/8" ZeroGlide Nut
Bridge	Maple w/ Ebony Cap	Maple w/ Ebony Cap
Head	12" Remo HC Renaissance	12" Remo MC Renaissance
Scale Length	26-3/16"	26-3/16"
Weight	6.5 lbs.	5.8 lbs.
Tuning	GDGBD	GDGBD
Strings	.011, .024w, .016, .013, .011	
Finish	Natural / High Gloss	Natural / High Gloss
Plating	Nickel Plated	Chrome Plated
Options	Lefty	SMP+ Pickup / Lefty
Hard Case	Included	HD15-M (Available)
Bag	HPB (Available)	Included



Bob Carlin

Acoustic Composite Series

pg. 31

Patrick van Zandwijk



Acoustic Composite Series

Proclaimed "Best in Show / MUST Stock" at Summer NAMM 2016, the AC-series sets the bar for an economical, well-made, great-sounding and durable banjo. The AC-Series are some of our most affordable banjos, featuring a composite rim, ZeroGlide nut system for playability, and a special transferable 5-year warranty for resale.



	AC-1	AC-5	AC-6+	AC-Traveler	AC-4/AC-4IT
Rim	11" Composite	11" Composite	11" Composite	11" Composite	11" Composite
Tension Hoop	11" Flat Bar	11" Flat Bar	11" Flat Bar	11" Flat Bar	11" Flat Bar
Neck	Nato	Maple	Maple	Nato	Nato
Tuners	Covered Guitar-Style	Covered Guitar-Style	Sealed Guitar-Style	Covered Guitar-Style	Covered Guitar-Style
Tailpiece	Adjustable	Terminator	Terminator	Vintage Style	Vintage Style
Resonator		Composite	Composite		
Arm Rest		Gold Tone Engraved	Gold Tone Engraved		
Fingerboard	Rosewood	Rosewood	Rosewood	Rosewood	Rosewood
Inlay	Dot	Dot	Dot	Dot & Star	Dot
Truss Rod	Two-Way Adjustable	Two-Way Adjustable	Two-Way Adjustable	Two-Way Adjustable	Two-Way Adjustable
Nut Width	1-3/16" ZeroGlide Nut	1-3/16" Bone ZeroGlide Nut	1-11/16" Bone ZeroGlide Nut	1-1/4" ZeroGlide Nut	1-3/16" ZeroGlide Nut
Bridge	Maple w/ Ebony Cap	Maple w/ Ebony Cap	Maple w/ Ebony Cap	Maple w/ Ebony Cap	Maple w/ Ebony Cap
Pickup	Optional: SMP+ Pickup	Optional: SMP+ Pickup	SMP+ w/ Volume Control	Optional: SMP+ Pickup	Optional: SMP+ Pickup
Head	11" Remo LC Frosted	11" Remo LC Frosted	11" Remo LC Smooth	11" Remo LC Frosted	11" Remo LC Smooth
Scale Length	26-3/16"	26-3/16"	25-1/2"	23-1/2"	22-3/4"
Weight	3.75 lbs.	5.5 lbs.	6 lbs.	4 lbs.	3.5 lbs.
Tuning	GDGBD	GDGBD	EADGBE	GDGBD	CGDA / GDAAE
Strings	.011, .024W, .016, .013, .011	.011, .024W, .016, .013, .011	.052W, .042W, .032W, .020W, .013, .010	.011, .024W, .016, .013, .011	.030W, .022W, .016, .009 / .040W, .030W, .020W, .013
Finish	Black / Satin	Natural / Satin	Natural / Satin	Black / Satin	Black / Satin
Hardware	Chrome Plated	Chrome Plated	Chrome Plated	Chrome Plated	Chrome Plated
Options	Lefty	Lefty	Lefty	Lefty	Lefty
Hard Case	HD14 (Available)	HD15M (Available)	HD15 (Available)	HDTR15-M (Available)	HDTR15-M (Available)
Bag	Included	Included	Included	Included	Included

Resonator Banjos

pg. 33-37



Reuel Zavala (Morgan Leigh Band)
with his BG-150F

OB-3 Mastertone™ "Twanger"

In late 2018, "Banjo Ben" Clark, Jake Stogdill, and Robby Boone had a concept for replicating one of the most iconic banjos, played by the one of the most iconic banjo players of all time, JD Crowe's original RB-3 ("Banger"). After extensive research, and with great attention to every detail, Gold Tone was able to rebirth this classic banjo.

What makes this banjo truly unique is its "No Hole" tone ring, which really tightens up the sustain. It also features the original measurements on the headstock, neck and body, nickel plated hardware, slanted resonator walls, vintage inlay, a Presto tailpiece, concentric resonator rings, and a brown mahogany finish. We've designed hundreds of banjos in the last 25 years, but tone-wise,



Tone Ring	11" Flat Top - No Hole - Brass
Rim	11" 3-Ply Maple
Tension Hoop	11" Notched
Neck	Mahogany
Tuners	Gotoh Planetary
Tailpiece	Presto Style
Resonator	14" Mahogany w/ Angled Sidewalls
Arm Rest	Plain
Fingerboard	Rosewood
Inlay	Pearloid Leaves & Bows
Truss Rod	Two-Way Adjustable
Nut Width	1-1/4" Bone Nut
Bridge	Maple w/ Ebony Cap (7/8")
Head	11" Remo HC Coated Topside
Scale Length	26-1/4"
Weight	13 lbs.
Tuning	GDGBD
Strings	.011, .024w, .016, .013, .011
Finish	Natural / High Gloss
Hardware	Nickel Plated
Options	SMP+ Pickup / Fishman Rare Earth Pickup / Lefty
Hard Case	Included
Bag	HPB (Available)

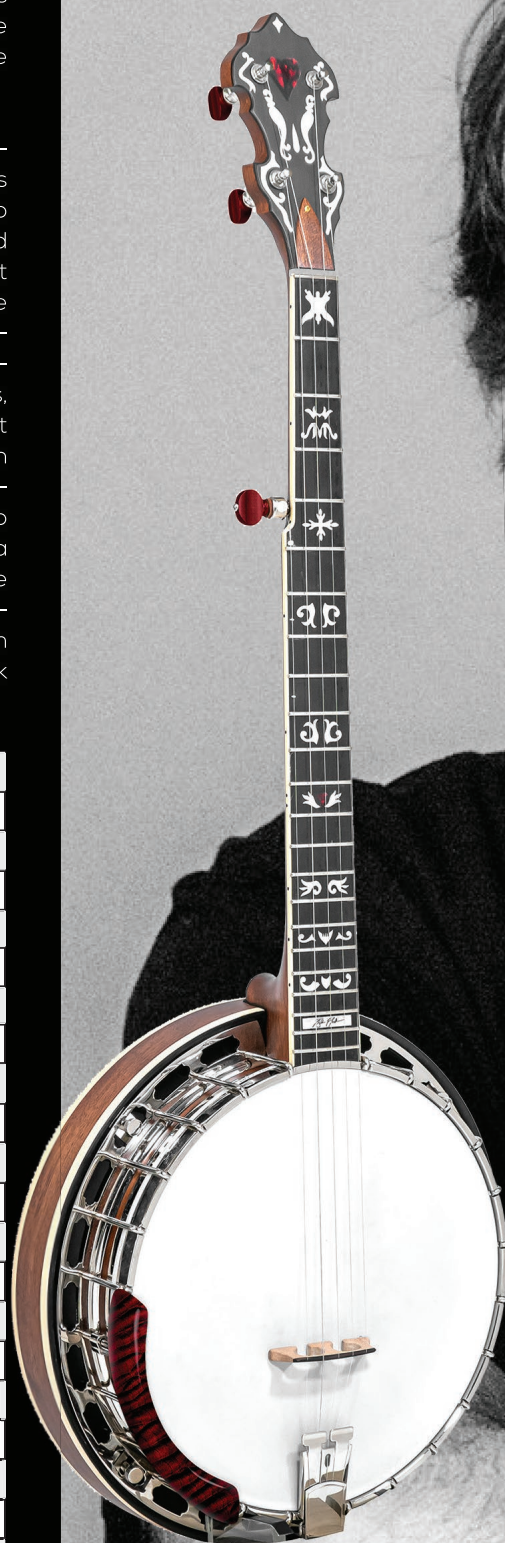
"Bluegrass Heart" Béla Fleck Signature Model

The Gold Tone Béla Fleck signature model Bluegrass banjo is a collaboration between Béla fleck, Marc Horowitz (a former teacher of Bélas), and Gold Tone CEO Wayne Rogers. Two Years ago, Gold Tone and Banjo Ben created a replica of the JD Crowe "Banger" which included a bronze no-hole tone ring, flying eagle inlay, and similar cosmetics.

The Gold Tone "Twanger" quickly became our best-selling professional banjo. Mark Horowitz started using the Twanger as his on-stage banjo and recommended to Béla that he may want to give it a try because of its impressive tone and playability. Gold Tone delivered to Béla a set-up Twanger and Béla thought that it may have potential. So, Gold Tone asked Béla if he would like to try an OB-3 pot with the features found on his pre-war Gibson. Béla confirmed his interest, so we provided him with prototype #1 which included his wider radiused neck, jumbo frets, 7/8" bridge, and flying eagle inlay. Béla tested and thought that it may have potential, but many changes needed to be made in order to define his desired tone. Béla then sent Gold Tone a Gibson Mastertone Banjo, which they had made many years ago to entice Béla to produce a Fleck Model. This model included a replica of Béla's famous Monteville replacement neck, which he has used on his Pre-War Gibson pot throughout his career. Prototypes #2, 3, and 4 were then developed after conferring with Béla on every possible spec including inlay, finish, armrest, neck

Tone Ring	12" Bronze Sand Cast
Rim	12" 3-Ply Maple
Tension Hoop	12" Notched
Neck	Hard Rock Maple
Tuners	GT Planetary
Tailpiece	Terminator
Resonator	14" Maple
Arm Rest	Gold Tone Engraved
Fingerboard	Ebony 5-10" Compound Radiused
Inlay	Nouveau Custom
Truss Rod	Two-Way Adjustable
Nut Width	1-3/8" ZeroGlide Nut
Bridge	10" Radiused Maple w/ Ebony Cap (7/8")
Head	12" Remo MC Black Suede
Scale Length	26-1/4"
Weight	9.2 lbs.
Tuning	CGCEG
Strings	.018w, .040w, .030w, .022w, .018w
Finish	Vintage Brown / High Gloss
Hardware	Chrome Plated
Options	SMP+ Pickup / Fishman Rare Earth Pickup / Lefty
Hard Case	Included
Bag	HPB (Available)

The Béla Fleck



Banjo Models



ML-1 Mastertone™ Missing Link

Béla and Gold Tone president Wayne Rogers met at the Summer NAMM music trade show to discuss a new type of banjo. Béla and his wife, Abigail Washburn, were about to begin a concert tour, and since they would be performing many banjo duets he wanted a deeper-voiced instrument to compliment and blend with Abby's standard-tuned banjo.

They decided to voice the Missing Link halfway between the standard G-tuned banjo and our octave-lower cello banjo. Thus, the ML-1 is tuned to cGCEG. This is a fifth lower than open G. They also decided on a twelve inch pot, because the larger the pot, the more low-end output.

The name, The Missing Link, was Béla's idea. He said that the ML-1 was the missing link between the cello banjo and the regular five-string. Béla recorded with it on five of the tracks on Abigail and Béla's 2014 duet album (Béla Fleck & Abigail Washburn), which debuted at #1 on Billboard Magazine's Bluegrass chart.

Tone Ring	12" Bronze Sand Cast
Rim	12" 3-Ply Maple
Tension Hoop	12" Notched
Neck	Hard Rock Maple
Tuners	GT Planetary
Tailpiece	Terminator
Resonator	14" Maple
Arm Rest	Gold Tone Engraved
Fingerboard	Ebony 5-10" Compound Radiused
Inlay	Nouveau Custom
Truss Rod	Two-Way Adjustable
Nut Width	1-3/8" ZeroGlide Nut
Bridge	10" Radiused Maple w/ Ebony Cap (7/8")
Head	12" Remo MC Black Suede
Scale Length	26-1/4"
Weight	9.2 lbs.
Tuning	CGCEG
Strings	.018w, .040w, .030w, .022w, .018w
Finish	Vintage Brown / High Gloss
Hardware	Chrome Plated
Options	SMP+ Pickup / Fishman Rare Earth Pickup / Lefty
Hard Case	Included
Bag	HPB (Available)

Orange Blossoms

Gold Tone's Orange Blossom (OB) banjos pay homage to the pre-WWII banjos played by Earl Scruggs. All Orange Blossom models feature a sand-cast flathead tone ring, a cast metal flange, maple neck with a two-way adjustable truss rod and an ebony fretboard that is exquisitely inlaid. Improvements on the vintage theme include a straight-pull tailpiece, metric threads (for finer tension adjustment) and a slightly deeper resonator, giving more air volume for increased low-end resonance.



HPB



OB-300
w/ case



OB-250+ (TP), OB-250,
w/ case



OB-250AT
w/ case



OB-150
w/ case

	OB-300	OB-250+ & OB-250+TP	OB-250 & OB-250AT	OB-150	OB-150RF & OB-150WF
Tone Ring	11" Bell Bronze	11" JLS #12 Bell Bronze (USA)	11" Bell Brass / 40-Hole Brass Sand Cast Archtop	11" Brass Flat Top	11" Brass Flat Top
Rim	11" 3-Ply Maple	11" 3-Ply Maple / 11" Tony Pass Birch Block (TP)	11" 3-Ply Maple	11" 3-Ply Maple	11" 3-Ply Maple
Tension Hoop	11" Notched	11" Notched	11" Notched	11" Notched	11" Notched
Flange	One Piece Cast	One Piece Cast	One Piece Cast	One Piece Cast	One Piece Cast
Neck	Curly Maple	Curly Maple	Maple	Maple	Maple
Tuners	GT Master Planetary	GT Master Planetary	GT Master Planetary	GT Planetary	GT Planetary
Tailpiece	Straightline	Straightline	Straightline	Terminator	Terminator
Resonator	14" Flamed Maple	14" Flamed Maple	14" Flamed Maple	14" Maple	14" Maple
Arm Rest	Gold Tone Engraved	Gold Tone Engraved	Gold Tone Engraved	Gold Tone Engraved	Gold Tone Engraved
Fingerboard	Ebony	Ebony	Ebony	Rosewood	Radiused Rosewood / Wide Fingerboard Rosewood
Inlay	Modified Tree of Life	Hearts & Flowers	Hearts & Flowers	Vintage Pearloid	Vintage Pearloid
Truss Rod	Two-Way Adjustable	Two-Way Adjustable	Two-Way Adjustable	Two-Way Adjustable	Two-Way Adjustable
Nut Width	1-3/16" ZeroGlide Nut	1-3/16" ZeroGlide Nut	1-3/16" ZeroGlide Nut	1-3/16" ZeroGlide Nut	1-3/16" / 1-5/16" ZeroGlide Nut
Bridge	Snuffy Smith	Maple w/ Sampson BG	Maple w/ Ebony Cap	Maple w/ Ebony Cap	Maple w/ Ebony Cap
Head	11" Remo HC Coated Topside	11" Remo HC Coated Topside	11" Remo HC Coated Topside	11" Remo HC Coated Topside	11" Remo HC Coated Topside
Scale Length	26-3/16"	26-3/16"	26-3/16"	26-1/4"	26-1/4"
Weight	13 lbs.	13.5 lbs.	13 lbs.	11.5 lbs.	11.5 lbs.
Tuning	GDGBD	GDGBD	GDGBD	GDGBD	GDGBD
Strings	.011, .024W, .016, .013, .011	.011, .024W, .016, .013, .011	.011, .024W, .016, .013, .011	.011, .024W, .016, .013, .011	.011, .024W, .016, .013, .011
Finish	Vintage Brown / High Gloss	Vintage Brown / High Gloss	Vintage Brown / High Gloss	Vintage Brown / Satin	Vintage Brown / Satin
Hardware	Triple Plated Gold	Chrome Plated	Chrome Plated	Chrome Plated	Chrome Plated
Options	SMP+ Pickup	SMP+ Pickup / Lefty	SMP+ Pickup / Lefty	SMP+ Pickup / Lefty	SMP+ Pickup
Hard Case	Included	Included	Included	Included	Included
Bag	HPB (Available)	HPB (Available)	HPB (Available)	HPB (Available)	HPB (Available)

Bluegrass 5-Strings

These Bluegrass-style 5-strings all feature slimline Canadian maple necks with two-way adjustable truss rods, and geared fifth string pegs for easy, accurate tuning. Each banjo is carefully set up in our shop, so that all parts fit tightly and the playing action is low and comfortable.



HD16



BG-150F
w/ bag



MC-150RP



AC-5
w/ bag

	BG-150F	MC-150RP	AC-5
Tone Ring	11" Rolled Brass Flat Bar	11" Steel Alloy	
Rim	11" Multi-Ply Maple	11" Multi-Ply Maple	11" Composite
Tension Hoop	11" Notched	11" Notched	11" Flat Bar
Flange	Flat Flange		
Neck	Maple	Maple	Maple
Tuners	GT Planetary	GT Master Planetary	Covered Guitar-Style
Tailpiece	Straightline	Straightline	Terminator
Resonator	14" Mahogany	13" Maple	13" Composite
Arm Rest	Gold Tone Engraved	Gold Tone Engraved	Gold Tone Engraved
Fingerboard	Rosewood	Rosewood	Rosewood
Inlay	Hearts & Flowers	Snowflake	Dot
Truss Rod	Two-Way Adjustable	Two-Way Adjustable	Two-Way Adjustable
Nut Width	1-3/16" ZeroGlide Nut	1-3/16" ZeroGlide Nut	1-3/16" ZeroGlide Nut
Bridge	Maple w/ Ebony Cap	Maple w/ Ebony Cap	Maple w/ Ebony Cap
Head	11" Remo HC Coated Topside	11" Remo HC Coated Topside	11" Remo LC Coated Topside
Scale Length	26-3/16"	26-3/16"	26-3/16"
Weight	8.5 lbs.	9 lbs.	5.5 lbs.
Tuning	GDGBD	GDGBD	GDGBD
Strings	.011, .024w, .016, .013, .011	.011, .024w, .016, .013, .011	.011, .024w, .016, .013, .011
Finish	Vintage Brown / High Gloss	Natural / High Gloss	Natural / Satin
Plating	Chrome Plated	Chrome Plated	Chrome Plated
Options	SMP+ Pickup / Lefty	SMP+ Pickup / Lefty	SMP+ Pickup / Lefty
Hard Case	HD16 (Available)	HD15 (Available)	HD15M (Available)
Bag	Included	HPB (Available)	Included

Cripple Creek Series

pg. 39-41



Cripple Creek 100 Series



HD15/HD14

CC-100R+
w/ bag

CC-100+
w/ bag

CC-100R & RW
w/ bag

CC-100
w/ bag

	CC-100R+	CC-100+	CC-100R & CC-100RW	CC-100
Tone Ring	11" Rolled Brass Flat Bar	11" Rolled Brass Flat Bar	11" Rolled Brass Flat Bar	11" Rolled Brass Flat Bar
Rim	11" 3-Ply Maple	11" 3-Ply Maple	11" Multi-Ply Maple	11" Multi-Ply Maple
Tension Hoop	11" Flat Bar	11" Flat Bar	11" Flat Bar	11" Flat Bar
Neck	Maple	Maple	Maple	Maple
Tuners	GT Planetary	GT Planetary	GT Planetary	Sealed Guitar-Style
Brackets	24	24	24	24
Tailpiece	Terminator	Terminator	Terminator	Terminator
Resonator	13" Maple	13" Maple	13" Maple	13" Maple
Arm Rest	Gold Tone Engraved	Gold Tone Engraved	Gold Tone Engraved	Gold Tone Engraved
Fingerboard	Rosewood	Rosewood	Rosewood	Rosewood
Inlay	Snowflake	Snowflake	Snowflake	Snowflake
Truss Rod	Two-Way Adjustable	Two-Way Adjustable	Two-Way Adjustable	Two-Way Adjustable
Nut Width	1-3/16" ZeroGlide Nut	1-3/16" ZeroGlide Nut	1-3/16" / 1-5/16" ZeroGlide Nut	1-3/16" ZeroGlide Nut
Bridge	Maple w/ Ebony Cap	Maple w/ Ebony Cap	Maple w/ Ebony Cap	Maple w/ Ebony Cap
Head	11" Remo LC Coated Topside	11" Remo LC Coated Topside	11" Remo LC Coated Topside	11" Remo LC Coated Topside
Scale Length	26-3/16"	26-3/16"	26-3/16"	26-3/16"
Weight	6.6 lbs.	6 lbs.	6.5 lbs.	6 lbs.
Tuning	GDGBD	GDGBD	GDGBD	GDGBD
Strings	.011, .024w, .016, .013, .011	.011, .024w, .016, .013, .011	.011, .024w, .016, .013, .011	.011, .024w, .016, .013, .011
Finish	Vintage Brown / High Gloss	Vintage Brown / High Gloss	Natural / High Gloss	Natural / High Gloss
Hardware	Chrome Plated	Chrome Plated	Chrome Plated	Chrome Plated
Options	Lefty	Lefty	SMP+ Pickup / Lefty	SMP+ Pickup / Lefty
Pickup	SMP+	SMP+		
Hard Case	HD15 (Available)	HD14 (Available)	HD15 (Available)	HD14 (Available)
Bag	Included	Included	Included	Included

Cripple Creek 50 Series



**HD15/HD14
HDTR15-M**

CC-50RP
w/ bag

CC-50
w/ bag

CC-50TR
w/ bag

**CC-BG
Package**
w/ bag

**CC-OT & CC-OTA
Package**
w/ bag

	CC-50RP	CC-50	CC-50TR	CC-BG	CC-OT & CC-OTA
Tone Ring	11" Rolled Brass Flat Bar	11" Rolled Brass Flat Bar	11" Rolled Brass Flat Bar	11" Rolled Brass Flat Bar	11" Rolled Brass Flat Bar
Rim	11" Multi-Ply Maple	11" Multi-Ply Maple	11" Multi-Ply Maple	11" Multi-Ply Maple	11" Multi-Ply Maple
Tension Hoop	11" Flat Bar	11" Flat Bar	11" Flat Bar	11" Flat Bar	11" Flat Bar
Neck	Maple	Maple	Maple	Maple	Maple
Tuners	GT Planetary	Sealed Guitar-Style	Sealed Guitar-Style	Sealed Guitar-Style	GT Planetary
Brackets	18	18	18	18	18
Tailpiece	Terminator	Terminator	Terminator	Terminator	No-Knot
Resonator	13" Maple			13" Maple	
Arm Rest	Gold Tone Engraved	Gold Tone Engraved	Gold Tone Engraved	Gold Tone Engraved	Vintage-Style
Fingerboard	Rosewood	Rosewood	Rosewood	Rosewood	Rosewood w/ Scoop
Inlay	Dot	Dot	Dot	Dot	Dot & Star
Truss Rod	Two-Way Adjustable	Two-Way Adjustable	Two-Way Adjustable	Two-Way Adjustable	Two-Way Adjustable
Nut Width	1-3/16" ZeroGlide Nut	1-3/16" ZeroGlide Nut	1-3/16" ZeroGlide Nut	1-3/16" ZeroGlide Nut	1-3/16" ZeroGlide Nut
Bridge	Maple w/ Ebony Cap	Maple w/ Ebony Cap	Maple w/ Ebony Cap	Maple w/ Ebony Cap	Maple w/ Ebony Cap
Head	11" Remo LC Coated Topside	11" Remo LC Coated Topside	11" Remo LC Coated Topside	11" Remo LC Coated Topside	11" Remo LC Fiberskyn
Scale Length	26-3/16"	26-3/16"	23-9/16"	26-3/16"	26-3/16" & 23-9/16"
Weight	6.5 lbs.	5.5 lbs.	5 lbs.	6.5 lbs.	5.5 lbs.
Tuning	GDGBD	GDGBD	AEAC#E	GDGBD	GDGBD / AEAC#E
Strings	.011, .024w, .016, .013, .011	.011, .024w, .016, .013, .011	.011, .024w, .016, .013, .011	.011, .024w, .016, .013, .011	.011, .024w, .016, .013, .011
Finish	Vintage Brown / Satin	Vintage Brown / Satin	Vintage Brown / Satin	Vintage Brown / Satin	Vintage Brown / Satin
Hardware	Chrome Plated	Chrome Plated	Chrome Plated	Chrome Plated	Chrome Plated
Options	SMP+ Pickup / Lefty	SMP+ Pickup / Lefty	SMP+ Pickup / Lefty	SMP+ Pickup / Lefty	SMP+ Pickup / Lefty
Hard Case	HD15 (Available)	HD14 (Available)	HDTR15-M (Available)	HD15 (Available)	HD14 & HDTR15-M (Available)
Bag	Included	Included	Included	Included	Included

Cripple Creek Banjos

Gold Tone combines the proven design of the Cripple Creek series with necks of various scale lengths to provide an affordable option, regardless of your playing style. All Cripple Creek models can be upgraded



HD-15



CC-Banjitar
w/ bag

CC-Plectrum
w/ bag

CC-Tenor
w/ bag

CC-IT
w/ bag

CC-Mini
w/ bag

	CC-Banjitar	CC-Plectrum	CC-Tenor	CC-Irish Tenor	CC-Mini
Tone Ring	11" Rolled Brass Flat Bar	11" Rolled Brass Flat Bar	11" Rolled Brass Flat Bar	11" Rolled Brass Flat Bar	8" Rolled Brass Flat Bar
Rim	11" Multi-Ply Maple	11" Multi-Ply Maple	11" Multi-Ply Maple	11" Multi-Ply Maple	8" Multi-Ply Maple
Tension Hoop	11" Flat Bar	11" Flat Bar	11" Flat Bar	11" Flat Bar	8" Flat Bar
Neck	Maple	Maple	Maple	Maple	Maple
Tuners	Sealed Guitar-Style	Sealed Guitar-Style	Sealed Guitar-Style	Sealed Guitar-Style	Sealed Guitar-Style
Tailpiece	Terminator	Terminator	Terminator	Terminator	No-Knot
Resonator	13" Maple	13" Maple	13" Maple	13" Maple	
Arm Rest	Gold Tone Engraved	Gold Tone Engraved	Gold Tone Engraved	Gold Tone Engraved	Vintage-Style
Fingerboard	Radiused Rosewood	Rosewood	Rosewood	Rosewood	Rosewood
Inlay	Dot	Snowflake	Snowflake	Snowflake	Snowflake
Truss Rod	Two-Way Adjustable	Two-Way Adjustable	Two-Way Adjustable	Two-Way Adjustable	Two-Way Adjustable
Nut Width	1-11/16" ZeroGlide Nut	1-3/16" ZeroGlide Nut	1-1/4" ZeroGlide Nut	1-1/16" ZeroGlide Nut	1-3/16" ZeroGlide Nut
Bridge	Maple w/ Ebony Cap	Maple w/ Ebony Cap	Maple w/ Ebony Cap	Maple w/ Ebony Cap	Maple w/ Ebony Cap
Head	11" Remo LC Smooth	11" Remo LC Smooth	11" Remo LC Smooth	11" Remo LC Smooth	8" Remo LC Smooth
Scale Length	25-1/2"	26-3/16"	22-5/8"	19-3/4"	19-3/4"
Weight	7 lbs.	6.3 lbs.	5 lbs.	5 lbs.	4 lbs.
Tuning	EADGBE	DGBD	CGDA	GDAE	CGCEG
Strings	.052w, .042w, .032w, .020w, .016, .010	.024w, .016, .013, .010	.030w, .022w, .016, .009	.040w, .030w, .020w, .013	.010, .024w, .016, .013, .010
Finish	Vintage Brown / Satin	Natural / High Gloss	Natural / High Gloss	Natural / High Gloss	Natural / High Gloss
Hardware	Chrome Plated	Chrome Plated	Chrome Plated	Chrome Plated	Chrome Plated
Options	SMP+ Pickup / Lefty	SMP+ Pickup / Lefty	SMP+ Pickup / Lefty	SMP+ Pickup / Lefty	SMP+ Pickup / Lefty
Hard Case	HD15 (Available)	HD15 (Available)	HDTR15 (Available)	HDITR15 (Available)	
Bag	Included	Included	Included	Included	Included

Additional Banjos

pg. 43-49



Gravin Baulac

Cello Banjos *Folk/Alternative Instruments*

Cello Banjos were originally used in turn-of-the-20th century banjo orchestras. The CEB-5 is tuned one octave lower than a standard 5-string. The Marcy Marxer Signature 4-string version, the CEB-4, is tuned in fifths. Their 14" pots create a rich bass resonance for a unique voicing that blends melody lines and accompaniments. Please visit Goldtone.com for CEB string replacements.



Austin Quattlebaum

	CEB-4	CEB-5
Tone Ring	14" Rolled Brass Flat Bar	14" Rolled Brass Flat Bar
Rim	14" Multi-Ply Maple	14" Multi-Ply Maple
Tension Hoop	14" Notched	14" Notched
Neck	Maple	Maple
Tuners	GT Master Planetary	GT Master Planetary
Tailpiece	Terminator	Terminator
Arm Rest	Hot Dog	Hot Dog
Fingerboard	Ebony	Ebony
Inlay	Weymann Vintage	Weymann Vintage
Truss Rod	Two-Way Adjustable	Two-Way Adjustable
Nut Width	1-9/16" ZeroGlide Nut	1-9/16" ZeroGlide Nut
Head	14" HC Remo Renaissance	14" HC Remo Renaissance
Scale Length	24-3/4"	24-3/4"
Weight	8 lbs.	8 lbs.
Tuning	CGDA	AEAC#E (Light Gauge) / GDGBD (Medium Gauge)
Strings	.048w, .042w, .034w, .042p	.024w, .044, .034w, .030w, .024w, / .028w, .048w, .042w, .034w, .028w
Finish	Vintage Brown / High Gloss	Vintage Brown / High Gloss
Hardware	Nickel Plated	Nickel Plated
Options	Lefty	Lefty
Hard Case	Included	Included
Bag	HBCE (Available)	HBCE (Available)

Mini Banjos

Folkternative Instruments

In 1999, Wayne Rogers handmade his first travel banjo to fulfill a customer request for an affordable instrument that could be brought along on a road trips. Wayne created the TB-100, weighing in at 2.5 lbs. and featured a pre-tuned head. This groundbreaking design was the foundation of what Gold Tone would grow to become. Ranging from



HBJ



BG-Mini
w/ case



CC-Mini
w/ bag



Plucky
w/ bag

	BG-Mini	CC-Mini	Plucky
Tone Ring	8" Rolled Brass Flat Bar	8" Rolled Brass Flat Bar	
Rim	8" Multi-Ply Maple	8" Multi-Ply Maple	8" Multi-Ply Maple
Tension Hoop	8" Flat Bar	8" Flat Bar	8" Flat Bar
Tuners	GT Planetary	Sealed Guitar-Style	Sealed Guitar-Style
Tailpiece	No Knot	No Knot	No Knot
Resonator	10" Mahogany		
Arm Rest	Vintage-Style	Vintage-Style	
Fingerboard	Rosewood	Rosewood	Maple
Inlay	Snowflake	Snowflake	Dot
Truss Rod	Two-Way Adjustable	Two-Way Adjustable	
Nut Width	1-3/16" ZeroGlide Nut	1-3/16" ZeroGlide Nut	1-3/16" ZeroGlide Nut
Bridge	Maple w/ Ebony Cap	Maple w/ Ebony Cap	Maple w/ Ebony Cap
Head	8" Remo LC Smooth	8" Remo LC Smooth	8" Remo LC Smooth
Scale Length	19-3/4"	19-3/4"	15-7/8"
Weight	5 lbs.	4 lbs.	2.1 lbs.
Total Length	29-1/2"	28-3/4"	26"
Tuning	CGCEG / GDGBD		
Strings	C-Tuning: .010, .024w, .016, .013, .010 / G-Tuning: .016, .020w, .024w, .034w, .016		
Finish	Vintage Brown / High Gloss	Natural / High Gloss	Vintage Brown / High Gloss
Plating	Chrome Plated	Chrome Plated	Chrome Plated
Options	SMP+ Pickup / Lefty	SMP+ Pickup / Lefty	SMP+ Pickup / Lefty
Hard Case	Included		
Bag	HBJ	Included	Included

Long Neck Banjos *Folkternative Instruments*

The first longneck banjo was commissioned by Pete Seeger (so he could sing in his keys while playing in a "G" tuning configuration) and then popularized by many 1960's folk groups including The Weavers and The Chad Mitchell Trio. Tuned three semitones lower than a standard 5-string banjo, they are versatile enough for anything from vocal accompaniment to capoing up for Bluegrass picking.



OT-800LN
w/ case

HDLN14

HPBLNO

MM-150LN

	OT-800LN	MM-150LN
Tone Ring	11" 32-Hole Tubaphone-Style	11" White Ladye
Rim	11" 3-Ply Maple Tubaphone-Style w/ Bracket Band	11" 3-Ply Maple
Tension Hoop	11" Notched	11" Notched
Neck	Maple	Maple
Tuners	GT Master Planetary	GT Planetary
Tailpiece	No Knot	No Knot
Arm Rest	Vintage-Style	Vintage-Style
Fingerboard	Ebony	Rosewood w/ Scoop
Inlay	Old Time	Snowflake
Truss Rod	Two-Way Adjustable	Two-Way Adjustable
Nut Width	1-3/16" ZeroGlide Nut	1-3/16" ZeroGlide Nut
Head	11" Remo HC Renaissance	11" Remo HC Renaissance
Bridge	Maple w/ Ebony Cap	Maple w/ Ebony Cap
Frets	25	21
Scale Length	32"	32"
Weight	9 lbs.	7 lbs.
Tuning	EBEG#B	EBEG#B
Strings	.013, .026w, .018, .016, .013	.013, .026w, .018, .016, .013
Finish	Vintage Brown / High Gloss	Natural / High Gloss
Hardware	Chrome Plated	Chrome Plated
Options	SMP+ Pickup / Lefty	SMP+ Pickup / Lefty
Hard Case	Included	Included
Bag	HPBLNO (Available)	HPBLNO (Available)



Kaia Kater

Dojo & Banjola

Folkternative Instruments

Every 5-string player needs a Dojo. Incredible sustain and pleasing tone make Dojos great alternative instruments. These instruments are similar in sound to resonator guitars but in banjo tuning. For additional sound styles, try using a slide. Dojos are a lot lighter than banjos and also make great practice instruments. Combining a standard 5-string banjo neck with an A-style mandola body, the Banjola is a beautiful instrument with exquisite tone and sustain that you won't



HDRD



Dojo-Dlx
w/ bag



HBB

HD15-M

Banjola+
w/ bag



	Dojo Dlx	Banjola+
Top	Flamed Maple	Solid Spruce
Back & Sides	Flamed Maple	Curly Stained Maple
Bridge	Maple w/ Ebony Cap	Adjustable Bridge
Cone & Spider	Cone & Biscuit Style	
Tuners	GT Planetary	GT Planetary
Tailpiece	Straightline	Vintage w/ Cover
Fingerboard	Rosewood	Rosewood
Inlay	Snowflake	Dot w/ Shooting Star
Truss Rod	Two-Way Adjustable	Two-Way Adjustable
Nut Width	1 -3/16" ZeroGlide Nut	1 -3/16" ZeroGlide Nut
Pickups	Stacked Humbucker	Bridge-Mounted Transducer Pickup
Scale Length	26-3/8"	26-1/2"
Weight	6.3 lbs.	4 lbs.
Tuning	GDGBD	GDGBD
Strings	.012, .026w, .018, .016, .012	.012, .026w, .018, .016, .012
Finish	Tobacco Sunburst / High Gloss	Natural / High Gloss
Hardware	Chrome Plated	Chrome Plated
Options	Capo Spikes, Transducer Pickup	Capo Spikes / Scoop
Hard Case	HDRD (Available)	HD15-M (Available)
Bag	Included	Included

Electric Banjos *Folkternative Instruments*



HDE

EBM-5



EB-5
w/ bag

EB-6
w/ bag



	EBM-5	EB-5	EB-6
Tone Ring	8" Aluminum		
Tension Hoop	Top Tension-Style		
Neck	Maple	Maple	
Top	Mahogany	Mahogany	
Back & Sides	Mahogany	Mahogany	
Fingerboard	Ebony	Rosewood	
Bridge	Maple w/ Ebony Cap	Maple w/ Ebony Cap	
Inlay	Snowflake	Dot	
Truss Rod	Two-Way Adjustable	Two-Way Adjustable	
Binding	White ABS	Black ABS	
Head	8" Remo MC Smooth	8" Remo PTS	
Nut Width	1-3/16" ZeroGlide Nut	1-3/16" ZeroGlide Nut	1-11/16" ZeroGlide Nut
Tailpiece	Straightline	Terminator	
Tuners	GT Master Planetary	GT Planetary	
Buttons	Pearloid	Black	
Pickups	Humbucker at Neck & SMP+ Under Head	Humbucker	
Scale Length	26-3/8"	26-1/4"	25-1/2"
Weight	8.3 lbs.	6 lbs	
Tuning	GDGBD	GDGBD	EADGBE
Strings	.011, .024w, .016, .013, .011	.011, .024w, .016, .013, .011	.052w, .042w, .032w, .020w, .016, .010
Finish	Tobacco Sunburst / High Gloss	Natural / Satin	
Hardware	Gold Plated	Chrome Plated / Black Anodized	
Options	Lefty	Lefty	
Hard Case	HDE (Available)	HD15-M (Available)	
Bag		Included	

Irish Tenor Banjos

Irish Tenor banjos have 17 frets and are usually tuned one octave lower than a mandolin. They're most often used with a flatpick to play a melody line. Our top of the line Irish Tenor, the IT-250F, was designed with input from Andy Perkins (owner of Andybanjo.com in Faversham, England) and is based on a custom design that he has worked on for years. Gold Tone has designed each Irish Tenor with different tone rings to suit the taste



IT-250F

IT-250
w/ case

IT-250R

CC-IT
w/ bag

IT-19
w/ bag

IT-17
w/ bag

AC-4IT
w/ bag

	IT-250F	IT-250 & IT-250R	CC-Irish Tenor	IT-19	IT-17	AC-4IT
Tone Ring	11" 40-Hole Brass Archtop	11" White Ladye	11" Rolled Brass Flat Bar	12" Rolled Brass Flat Bar	12" Rolled Brass Flat Bar	
Rim	11" 3-Ply Maple	11" 3-Ply Maple	11" Multi-Ply Maple	12" Multi-Ply Maple	12" Multi-Ply Maple	11" Composite
Tension Hoop	11" Notched	11" Notched	11" Flat Bar	11" Notched	11" Notched	11" Flat Bar
Tuners	GT Master Planetary	GT Master Planetary	Sealed Guitar-Style	GT Planetary	GT Planetary	Covered Guitar-Style
Flange	One-Piece					
Tailpiece	Banjo Cast	No Knot / Banjo Cast	Terminator	No Knot	No Knot	Vintage Style
Resonator	14" Mahogany	13" Maple (IT-250R)	13" Maple			
Arm Rest	Gold Tone Engraved	Vintage-Style	Gold Tone Engraved	Curly Maple Armrest / Satin		
Fingerboard	Ebony	Ebony	Rosewood	Rosewood	Rosewood	Rosewood
Inlay	Hearts & Flowers	Cloud	Snowflake	Clover	Clover	Dot
Truss Rod	Two-Way Adjustable	Two-Way Adjustable	Two-Way Adjustable	Two-Way Adjustable	Two-Way Adjustable	Two-Way Adjustable
Nut Width	1-1/8" ZeroGlide Nut	1-1/8" ZeroGlide Nut	1-1/16" ZeroGlide Nut	1-3/16" ZeroGlide Nut	1-3/16" ZeroGlide Nut	1-3/16" ZeroGlide Nut
Bridge	Maple w/ Ebony Cap	Maple w/ Ebony Cap	Maple w/ Ebony Cap	Maple w/ Ebony Cap	Maple w/ Ebony Cap	Maple w/ Ebony Cap
Head	11" Remo HC Renaissance	11" Remo HC Renaissance	11" Remo LC Smooth	12" Remo MC Renaissance	12" Remo MC Renaissance	11" Remo LC Smooth
Scale Length	19-3/4"	19-3/4"	19-3/4"	22-5/8"	19-3/4"	22-3/4"
Weight	11 lbs.	7 lbs. / 8 lbs.	5 lbs.	6 lbs.	6 lbs.	3.5 lbs.
Tuning	GDAE	GDAE	GDAE	GDAE	GDAE	GDAE
Strings	.040w, .030w, .020w, .010					
Finish	Vintage Brown / High Gloss	Vintage Brown / High Gloss	Natural / High Gloss	Vintage Brown / Satin	Vintage Brown / Satin	Black / Satin
Hardware	Chrome Plated	Chrome Plated	Chrome Plated	Chrome Plated	Chrome Plated	Chrome Plated
Options	SMP+ Pickup / Lefty	SMP+ Pickup / Lefty	SMP+ Pickup / Lefty	SMP+ Pickup / Lefty	SMP+ Pickup / Lefty	Lefty
Hard Case	HDIT16 (Available)	Included / HDIT15 (Available)	HDITR15 (Available)	HDIT15-M (Available)	HDIT15-M (Available)	HDTR15-M (Available)
Bag	HBIT (Available)	HBIT (Available)	Included	Included	Included	Included

Plectrum & Tenor Banjos

A plectrum banjo is tuned the same as strings one through four of the standard banjo; the tenor is tuned in fifths. Either can be tuned to Chicago tuning, like the top four strings of the guitar. Both instruments are usually played with a flatpick and are primarily used for accompaniment or single string melodies.



HBTR

HDTR15
HDTR16

PS-250

CC-Plectrum
w/ bag

TS-250
w/ case

CC-Tenor
w/ bag

AC-4
w/ bag

	PS-250	CC-Plectrum	TS-250	CC-Tenor	AC-4
Tone Ring	11" Bell Brass	11" Rolled Brass Flat Bar	11" Bell Brass	11" Rolled Brass Flat Bar	
Rim	11" 3-Ply Maple	11" Multi-Ply Maple	11" 3-Ply Maple	11" Multi-Ply Maple	11" Composite
Tension Hoop	11" Notched	11" Flat Bar	11" Notched	11" Flat Bar	11" Flat Bar
Tuners	GT Master Planetary	Sealed Guitar-Style	GT Master Planetary	Sealed Guitar-Style	Covered Guitar-Style
Flange	One-Piece		One Piece Cast		
Tailpiece	Banjo Cast	Terminator	Banjo Cast	Terminator	Vintage Style
Resonator	14" Mahogany	13" Maple	14" Mahogany	13" Maple	
Arm Rest	Gold Tone Engraved	Gold Tone Engraved	Gold Tone Engraved	Gold Tone Engraved	
Fingerboard	Rosewood	Rosewood	Rosewood	Rosewood	Rosewood
Inlay	Hearts & Flowers	Snowflake	Hearts & Flowers	Snowflake	Dot
Truss Rod	Two-Way Adjustable	Two-Way Adjustable	Two-Way Adjustable	Two-Way Adjustable	Two-Way Adjustable
Nut Width	1-3/16" ZeroGlide Nut	1-3/16" ZeroGlide Nut	1-3/16" ZeroGlide Nut	1-1/4" ZeroGlide Nut	1-3/16" ZeroGlide Nut
Bridge	Maple w/ Ebony Cap	Maple w/ Ebony Cap	Maple w/ Ebony Cap	Maple w/ Ebony Cap	Maple w/ Ebony Cap
Head	11" Remo HC Smooth	11" Remo LC Smooth	11" Remo HC Smooth	11" Remo LC Smooth	11" Remo LC Smooth
Scale Length	26-3/16"	26-3/16"	22-5/8"	22-5/8"	22-3/4"
Weight	12 lbs.	6.3 lbs.	11 lbs.	5 lbs.	3.5 lbs.
Tuning	DGBD	DGBD	CGDA	CGDA	CGDA
Strings	.024w, .016, .013, .010	.024w, .016, .013, .010	.030w, .022w, .016, .009	.030w, .022w, .016, .009	.030w, .022w, .016, .009
Finish	Vintage Brown / High Gloss	Natural / High Gloss	Vintage Brown / High Gloss	Natural / High Gloss	Black / Satin
Hardware	Chrome Plated	Chrome Plated	Chrome Plated	Chrome Plated	Chrome Plated
Options	SMP+ Pickup / Lefty	SMP+ Pickup / Lefty	SMP+ Pickup / Lefty	SMP+ Pickup / Lefty	Lefty
Hard Case	HD16 (Available)	HD15 (Available)	Included	HDTR15 (Available)	HDTR15-M (Available)
Bag	HPB (Available)	Included	HBTR (Available)	Included	Included

Factory Services

Gold Tone's instrument shop has luthiers on staff capable of repairing, building and restoring almost any type of stringed instrument. In addition to banjo work, we also do specified repairs on any of the instruments in our catalog, guitars and even violin work. We do not have a spray booth for large refinishing projects, but we are experts at fixing dings and scratches. We have many jigs from 40 years of instrument repair and we can install pickups in about any stringed instrument. Upon receiving instruments in our shop for repair, we can give an accurate estimate of the cost and the time needed to complete the repair.



Necks

Installing neck to an existing pot assembly. Our shop has a dedicated heel-cutting jig designed to perfectly fit necks. Includes professional setup.

Lefty Option- Approximately 75% of our instruments are available in left handed models

Fingerboard Scoop- Popular on openback banjos, a fingerboard scoop at the end of the neck allows for proper right hand clawhammer technique.

Install D-Tuners (Schaller)- We stock Schaller D-tuners. The Keith tuners are obtainable directly from Bill Keith, and if you supply, we would be happy to install.

Refretting - If played often enough, all instruments will eventually need new frets, especially in the most used playing positions. Fret alloy must be softer than the string or you would wear out strings immediately, so it's perfectly normal to wear out frets. Often frets may be dressed (leveled and crowned) once or twice before replacing. This procedure is best left to our experts; as well as dressed frets lead to good tone and accurate

Tone Rings

Install or upgrade to any tone ring- This is one of our most requested modifications. It is critical to make sure the tone ring fits the rim perfectly. It is nearly impossible to exchange a tone ring without modification to the rim.

Banjo Heads

Install or replace banjo head- Different head types and materials will dramatically affect your banjo's tone. See our available head options in our parts catalog.

Install EarthTone unmounted calfskin head- This lost art of tucking a head is performed often in our shop. We can restore your banjo pot to its original condition by tucking a calfskin head of any size.

Pickups and Instrument Amplification

Install pickup- We have a variety of acoustic and electric pickup options available ranging from simple transducers, magnetic pickups, and attachable microphones.

Instrument Modifications & Set up

Install Capo Spikes- The common 5th string capo spike positions for bluegrass banjo are at 7, 9, & 10 (keys A, B, & C) and at 7 (Key A or D) for old time banjo.

Install Shubb 5th string sliding capo- These permanent capos are available in both a long and short model.

Restringing and Restoring setup to factory specifications- This includes all adjustments, fret dressing, oiling of the fingerboard, possible bridge replacement, and new strings.

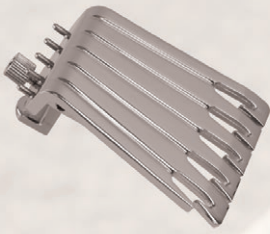
Full disassembly, cleaning, restringing, and detailed factory setup- With this process we carefully and systematically restore and set up your instrument as close to its original specifications as possible. Your banjo will sound and play at it's absolute best.

Gold plating option- Upgrade your banjo with gold-plated hardware. Note: gold plating is softer than chrome or nickel and is more likely to tarnish and deteriorate over time due to exposure to humidity and body oils.

To provide the best customer service possible, all instruments shipped to Gold Tone require a Return Authorization Number (RA#). Please call us at (321) 264-1970 to make shipping arrangements.

Gold Tone Parts

Gold Tone offers replacement parts for almost every instrument in our catalog. Whether replacing a lost piece, repairing a used instrument, or refurbishing a vintage instrument, check the goldtone.com website or the Gold Tone Parts Catalog to find exactly what you need.



Parts Offered:

Armrests

Body Hardware

Bridges

Coordinator Rods

Counterhoops

Flanges

Heads

Necks

Nuts

Pickups

Resonators

Resonator Hardware

Resophonic Parts

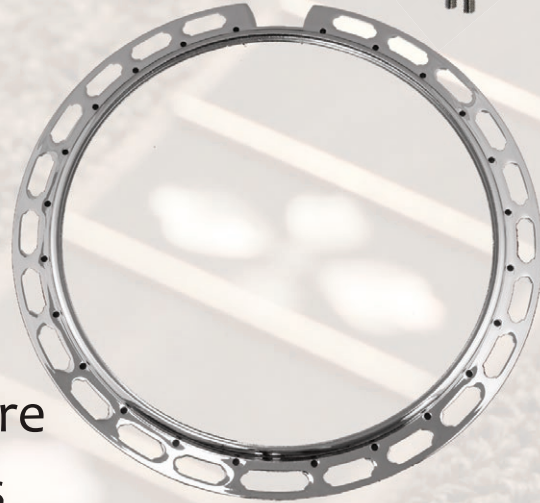
Rims

Tailpieces

Tone Rings

Truss Rod Covers

Tuners



ABS Pickup



Dave Carroll
Trampled by Turtles

Advanced Banjo/Resonator Guitar Microphone System

Most commonly used for Banjos and Resonator Guitars, the ABS features an infinitely adjustable cardioid microphone attached to the end of a small gooseneck cable for optimal sound capture. The ABS is shock mounted to prevent the introduction of extraneous vibrations. The ABS mounts quickly and easily to banjo J-hooks and to most resonator guitars tailpieces. The ABS fits a variety of instruments (Djembe, Upright Bass, Gypsy Jazz Guitars, etc.)



ABS (Dynamic Mic)

The ABS Dynamic Mic includes a floorbox-type preamp, ABS-2, which increases gain when activated. Connection to the sound system is accomplished with a standard 1/4" male guitar cable. Two 1/4" guitar cables are required for connection with pre-amp and amplifier. The ABS comes in a hard plastic carrying case with fitted foam inserts for the microphone and foot switch pedal.



ABS-C (Condenser Mic)

The ABS-C Condenser Mic produces much more gain. It requires phantom power, which makes the coil in the mic much more active resulting in at least twice the gain as any dynamic mic. Using the condenser your gain levels, pre-amped guitars and vocal condensers will be equal, which a sound engineer will find much more convenient. The ABS-C comes in a softshell carrying bag.



Pickups

Gold Tone®

SMP+ Sliding Magnetic Pickup

The SMP+ conveniently connects to both single and dual coordinator rod setups and easily slides toward the neck or the bridge to adjust tonality. The pickup bracket is designed to place the pickup any distance from the banjo head. The SMP+ does not require soldering and instead has quick connect cables. Easy installation with no alteration.

Hot Dot Transducer Pickup

A pair of stick-on transducer pickups that amplify wood-bodied stringed instruments. The two transducers can be placed in different areas to broaden the tonal capture of the instrument.

WBM Magnetic Pickup

A humbucker pickup properly spaced for the wider string spacing on the Weissenborn. The spacing produces equal volume for each string.

Chopper Mandolin Pickup

An undersaddle piezo-ceramic pickup embedded in an adjustable ebony replacement bridge. Designed for archtop-style mandolins.

FISHMAN

Active Resonator Pickup

The active model requires a 9-volt battery to power a preamp circuit board that is integrated into the output jack that allows you to plug directly into your sound system of choice.

Passive Resonator Pickup

The passive model's transducer is wired directly to a 1/4" output jack. The signal must then go through a preamp (such as our ABS-2) before being plugged into a powered amplifier.

Paul Beard Nashville Spider Pickup

The Fishman Nashville Spider-Style Resophonic Pickup features a split saddle piezo-ceramic pickup and comes with an included Paul Beard spider, and 1/4" external jack for easy mounting. Works on both squareneck and roundneck resonator guitars.

***Designed by Paul Beard*

Rare Earth Banjo Pickup

This pickup features a quiet humbucking coil and a powerful neodymium magnet assembly. It's specially designed preamp helps strengthen and preserve the natural sound of the banjo. Easy instal-

L.R. Baggs

Radius Mandolin Pickup

Developed primarily for mandolin, this transducer pickup works great on many wood bodied instruments. It can be mounted to the outside surface of the instrument with a removable adhesive, or we can permanently mount it inside. The output jack can be permanently installed as an end pin or on a side mount jack holder.

Accessories

Tuners & Capos

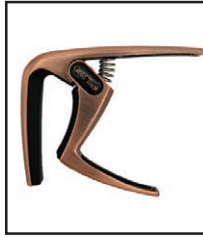
Fleck Tune Tuner



Swift Clip Tuner



Swift Capo



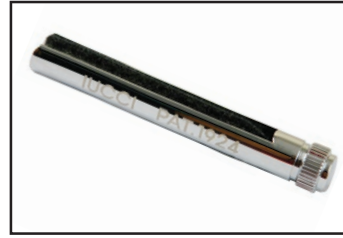
The **Fleck Tune™ Clip-on Tuner** is a heart-shaped one button clip-on tuner with chromatic, guitar, banjo, violin/mandolin, and soprano ukelele settings.

The **Swift Clip Tuner** - a one button clip-on tuner with chromatic, guitar, banjo, violin/mandolin, and soprano ukelele settings.

The **Swift Capo** is spring loaded and easily gripped, allowing you to quickly change keys on almost all fretted instruments.

Banjo Mutes

IUC: lucci Mute



MUTE: Ultimate Mute



Both styles of banjo mutes will decrease the volume of your instrument for unlimited practice and are as easy to put on as they are to take off.

The **lucci Mute (IUC)** slides on easily and has more weight resulting in decreased volume.

The **Ultimate Banjo Mute (MUTE)** fits 4, 5, and 6-String banjos and won't vibrate loose.

Gold Tone Outerwear

Gold Tone Logo

In the Shade



Black



Vintage Navy

Choose from two designs, "Gold Tone" logo or "In the Shade" logo.

Available in sizes: XS, S, M, L, XL, 2XL, 3XL

Instructional Videos



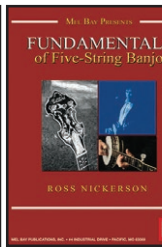
OID



CRD



BDVD



FUND

OID- Clawhammer Banjo with Bob Carlin is for beginners, this video will help you get started playing the banjo in the frailing (clawhammer) style.

CRD- Clawhammer Banjo Repertoire with Bob Carlin is aimed at helping intermediate players expand their repertoire of tunes in the clawhammer banjo style.

BDVD- Banjo Primer with Geoff Hohwald For Beginning bluegrass banjo instruction.

FUND- Fundamentals of Five-String Banjo with Ross Nickerson. For Beginning bluegrass banjo instruction.

Gold Tone Hats



Choose from five designs: The Beach Bum, The Classic, The Grizz, The Wayne Rogers, and the Flamingo.

FitsAll Instrument Stand

The FitsAll Stringed Instrument Stand features an expandable design made to fit almost any stringed instrument. It also collapses small enough to fit into the side pocket of most gig bags, making it a must-have for travelling musicians.



Accessories

Straps

DLX: Deluxe Leather Cradle



LS: Leather Cradle



This banjo cradle strap provides the best support, is the most convenient, and the safest to use on your banjo. It fully supports the pot without stressing the hooks like most other straps. The deluxe model (DLX) features double layered soft leather. The LS is made of top grain soft leather. This strap will not fit our Cripple Creek models. **Made in USA.**

SDLX: Slinger Dlx



SS: Slinger



Designed by Ric Scoles, this revolutionary sling supports the banjo like a normal strap but removes easily for storage in a case. A special angle sewed into the strap actually pulls the banjo toward the body. The Slinger only works on resonator banjos. We have two versions: Deluxe padded black (all leather) & Standard basic black (leather/cloth). **Made in USA.**

LBS: Leather Bracket Strap



CS: Cloth Strap



This comfortable soft leather strap is designed to securely attach to the brackets of openback and convertible banjos. Designed with leather tabs that will not scratch the banjo.

Specially designed cloth with leather tabs that fit under bracket hooks. These are superior to straps with metal hooks as they will not scratch the banjo. Choose from black or brown. Ideal for our Cripple Creek models.

Killer Cable



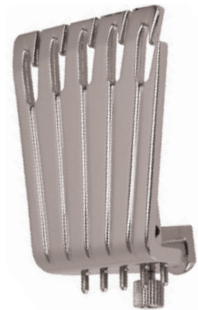
This double-shielded silent instrument cable uses a 1/4" SwitchPlug on one end of the cable, which uses a sliding helical spring contact design to eliminate thumps, pops, and squeals that happen while plugging and unplugging. Now you won't have to worry about offending any ears during instrument changes.

JLS Tone Rings



Gold Tone has acquired JLS! JLS Tone Rings are coveted for their accurate recreation of pre-war designs, down to the same metallurgy, dimensions, weight and tone response. For this reason, we have taken on the JLS name in order to provide you with a great way to improve the sound of your banjo! #4 and #12 available.

Terminator Tailpieces



Gold Tone's New tailpieces have more mass for improved tone. The tailpiece design allows for both loop and ball end strings. It provides optimal downward pressure on bridge with less stress points on the strings, which allows for improved tunability and speedy string changes. Available as 4-, 5- or 6-string.

String Gauges & Tunings

Model	Tuning	1st	2nd	3rd	4th	5th	6th	7th	8th	Type
Banjo, Electrics- Medium	GDGBD	.011	.013	.016	.024w	.011				loop/nickel
Banjo- Light	GDGBD	.009	.011	.0013	.022w	.009				loop/nickel
Banjo, Long Neck	EBEG#B	.013	.016	.018	.026w	.013				loop/nickel
Banjo, Baritone	CGCEG	.018w	.022w	.030w	.040w	.018w				loop/nickel
Banjo, Plectrum	DGBD	.010	.013	.016	.024w					loop/nickel
Banjo, Irish Tenor	GDAE	.010	.020w	.030w	.040w					loop/nickel
Banjo, Tenor	CGDA	.009	.016	.022w	.030w					loop/nickel
Banjo, Mini	CGCEG	.010	.013	0.016	.024w	.010				loop/nickel
	GDGBD	.016	.020w	.024w	.034w	.016				loop/nickel
Banjo, Travel	AEAC#E	.011	.013	.016	.024w	.011				loop/nickel
Dojo Dlx, Banjola+	GDGBD	.013	.016	.018	.026w	.012				loop/nickel
Banjo, Cello CEB-5 Lt	AEAC#E	.024w	.030w	.034w	.044w	.024w				silver/nylon
Banjo, Cello CEB-5 Med	GDGBD	.028w	.034w	.042w	.048w	.028w				silver/nylon
Banjo, Cello CEB-4	CGDA	.042p	.034w	.042w	.048w					silver/nylon
M-Guitar	EADGBE	.012	.016	.024	.035w	.045w	.054w			ball/phos
Tenor Guitar/MBT+	CGDA	.008	.014	.024w	.035w					ball/phos
Banjitar, ES-Banjitar	EADGBE	.010	.013	.020w	.032w	.042w	.052w			loop/nickel
WR-7	EADGBE	.010	.013	.020w	.032w	.042w	.052w	.011		loop/nickel
F-6 / A-6	EADGBE	.008	.012	.018	.024w	.032w	.042w			ball/bronze
F-12	EADGBE	.008	.012	.018	.024w	.032w	.042w			ball/bronze
		.008	.012	.018	.010	.014	.018			
GME-6	EADGBE	.010	.013	.020w	.032w	.042w	.052w			ball/nickel
GME-5	CGDAE	.011	.016	.026w	.040w	.052w				ball/nickel
GME-4	GDAE	.011	.016	.026w	.040w					ball/nickel
Mandolin, MB-850+	GDAE	.011	.016	.026w	.040w					loop/phos
Octave Mandolin, OM-800+	GDAE	.016	.020w	.035w	.050w					loop/phos
Mandola	CGDA	.016	.020w	.035w	.050w					loop/phos
Bouzouki	GDAD	.016	.016	.020	.020	.035w	.016	.045w	.020	loop/phos
MandoCello	CGDA	.070w	.044w	.034w	.020w					ball/phos
Resonator, Round/Metal	EADGBE	.012	.016	.024w	.035w	.045w	.054w			ball/phos
Resonator, Square	GBDGBD	.016	.018	.028w	.035w	.045w	.056w			ball/phos
Resonator, 8-String	EGBDEGBD	.016	.018	.026w	.032w	.035w	.045w	.056w	.059w	ball/phos
Weissenborn	DADF#AD	.014	.018	.026w	.034w	.044w	.056w			ball/phos
Lap Steel 6	DADF#AD	.014	.018	.026w	.034w	.044w	.056w			ball/nickel
Lap Steel 8	DFACDFAC	.012	.016	.024w	.030w	.035w	.042w	.052w	.70w	ball/nickel
Bass Banjo/PBB	EADG	.046w	.065w	.080w	.105w					ball/nickel
Banjolele	GCEA	.023	.030	.036	.025					nylgut
Banjo Uke, Soprano	GCEA	.023	.030	.036	.025					nylgut
Banjo Uke, Concert	GCEA	.023	.030	.036	.025					nylgut
Banjo Uke, Tenor	DGBE	.023	.030	.036	.025					nylgut
Banjo Uke, Baritone	DGBE	.023	.030	.036	.035w					nylgut
Ukulele / ResoUke	GCEA	.023	.030	.036	.025					nylgut

String Packs

Gold Tone is committed to offering high-quality strings to keep your instrument playing and sounding it's absolute best.

Banjo Strings

Type	Model	Gauges	Material
Gold Tone 5-String: Medium Gauge (silver-wound 4th string)	BSM	.011, .024w, .016, .013, .011	loop/nickel
Gold Tone 5-String: Medium/Light Gauge (silver-wound 4th string)	BSML	.010, .022w, .014, .012, .010	loop/nickel
Gold Tone 5-String: Light Gauge (silver-wound 4th string)	BSL	.009, .022w, .013, .011, .009	loop/nickel
Gold Tone Baritone: Custom Gauge	BBS	.018w, .040w, .030w, .022w, .018w	loop/nickel
Gold Tone Cello Banjo 5-String: Medium Gauge	CES5M	.028w, .048w, .042w, .034w, .028w Tunes to Open G & Double C	silver/nylon
Gold Tone Cello Banjo 5-String: Light Gauge	CES5L	.024w, .044w, .034w, .030w, .024w Tunes to Open A & Double D	silver/nylon
Gold Tone Cello Banjo 4-String: Custom Gauge	CES4	.048w, .042w, .034w, .040p	silver/nylon
Gold Tone Irish Tenor Banjo: Custom Gauge	ITBS	.040w, .030w, .020w, .010	loop/nickel
Gold Tone Long Neck Banjo: Custom Gauge	LNBS	.012, .026w, .018, .016, .012	loop/nickel

Guitar-Style Strings

Type	Model	Gauges	Material
Gold Tone Banjitar: Custom Gauge	BTS	.052w, .042w, .032w, .020w, .013, .010	loop/nickel
Mando Guitar: Custom Gauge (F-6)	FGS	.042w, .032w, .024w, .018, .012, .008	ball/bronze
Mando 12-String Guitar: Custom Gauge Light	FGS12EX	.042w/.018, .032w/.014, .024w/.010, .018/.018, .012/.012, .008/.008	ball/bronze
Gold Tone Weissenborn: Custom Gauge	WBS	.056w, .044w, .034w, .026w, .018, .014	ball/bronze

Mandolin-Style Strings

Type	Model	Gauges	Material
Octave Mandolin	OMS	.050w, .035w, .020w, .016 (doubled)	loop/bronze
Bouzouki	BZS-L	.050w, .035w, .020w, .016 (doubled)	loop/bronze
Bouzouki	BZS-B	.050w, .035w, .020w, .016 (doubled)	ball/bronze
Mandocello	MCS	.070w, .044w, .034w, .020w (doubled)	ball/bronze

MicroBass Strings

Type	Model	Gauges
Gold Tone by Aquila	MBS	Rubber/Polymer Strings - For all models
Silverback Strings, Labela Silver Wound	MBLNS	.115, .097, .065, .049 - For all models
LaBella Flat Wound	MBLB	.048, .068, .088, .108 - For solid body

Cases & Gig Bags

Protect your investment with a hardshell case or gig bag

Model #	Case	Bag	Model #	Case	Bag	Model #	Case	Bag
A-6 w/ bag		Incl.	CC-Plectrum w/ bag	HD15	Incl.	MC-150RP	HD15	HPB
AC-1 w/ bag	HD14	Incl.	CC-Tenor w/ bag	HDTR15	Incl.	ML-1 w/ case	Incl.	HPB
AC-4 w/ bag	HDTR15-M	Incl.	CEB-4 w/ case	Incl.	HBCE	MM-150	HD14	HPBO
AC-4IT w/ bag	HDTR15-M	Incl.	CEB-5 w/ case	Incl.	HBCE	MM-150LN	HDLN14	HPBLNO
AC-5 w/ bag	HD15-M	Incl.	Dojo Dlx w/ bag	HDRD	Incl.	OB-150 w/ case	Incl.	HPB
AC-6+ w/ bag	HD15-M	Incl.	EB-5 w/ bag	HD15-M	Incl.	OB-150RF & OB-150WF w/ case	Incl.	HPB
AC-Traveler w/ bag	HDTR15-M	Incl.	EB-6 w/ bag	HD15-M	Incl.	OB-250 w/ case	Incl.	HPB
Banjola+ w/ bag	HD15-M	Incl.	EBM-5	HDE		OB-250AT w/ case	Incl.	HPB
Banjolele w/ bag		Incl.	ES-Banjitar	HDE		OB-250+ w/ case	Incl.	HPB
Banjolele DLX w/ bag	HDBX	Incl.	F-6 w/ case	Incl.		OB-250+ TP w/ case	Incl.	HPB
BB-400+ w/ case	Incl.		F-12 w/ case	Incl.		OB-3 w/ case	Incl.	HPB
BC-350 w/ case	Incl.	HPB	GM-35 w/ case	Incl.		OB-300 w/ case	Incl.	HPB
BG-150F w/ bag	HD16	Incl.	GM-50+ w/ bag	HDMA	Incl.	OM-800+ w/ case	Incl.	HBTR
BG-Mini w/ case	Incl.		GM-70+	HDM		OT-800 w/ case	Incl.	HPBO
BT-1000 w/ bag	HD15-M	Incl.	GME-4 w/ bag		Incl.	OT-800LN w/ case	Incl.	HPBLNO
BU-1 w/ bag		Incl.	GME-5 w/ bag		Incl.	PBB w/ case	Incl.	
BUB w/ case	Incl.		GME-6 w/ bag		Incl.	PBR w/ case	Incl.	HBAG
BUC w/ case	Incl.		GRE	HDRD-M	HBAG	PBR-D w/ case	Incl.	HBAG
BUS w/ case	Incl.		GRS	HDRD	HBAG	PBR-CA w/ case	Incl.	HBAG
BUT w/ case	Incl.		GT-500	HD15	HPB	PBS w/ case	Incl.	HBAG
BZ-500 w/ case	Incl.		GT-750 w/ case	Incl.	HPB	PBS-8 w/ case	Incl.	HBAG
CB-100	HD14	HPBO	IT-17 w/ bag	HDIT15-M	Incl.	PBS-D w/ case	Incl.	HBAG
CC-50 w/ bag	HD14	Incl.	IT-19 w/ bag	HDIT15-M	Incl.	PBS-M w/ case	Incl.	HBAG
CC-50RP w/ bag	HD15	Incl.	IT-250 w/c ase	Incl.	HBIT	Plucky w/ bag		Incl.
CC-50TR w/ bag	HDTR15-M	Incl.	IT-250F	HDIT16	HBIT	PS-250	HD16	HPB
CC-BG w/ bag	HD15	Incl.	IT-250R	HDIT15	HBIT	ResoUke/Concert w/ bag		Incl.
CC-OT w/ bag	HD14	Incl.	Little Gems w/ bag		Incl.	ResoUke/Tenor w/ bag		Incl.
CC-OTA w/ bag	HDTR15-M	Incl.	LS-6 Lap Guitar w/ case	Incl.	HBLS	ResoMaple/Concert w/ bag		Incl.
CC-100 w/ bag	HD14	Incl.	LS-8 Lap Guitar w/ case	Incl.	HBLS	ResoMaple/Tenor w/ bag		Incl.
CC-100R & CC-100RW w/ bag	HD15	Incl.	M-Guitar w/ bag		Incl.	TG-10 w/ bag	HDRD	Incl.
CC-100+ w/ bag	HD14	Incl.	Mandocello w/ case	Incl.		TG-18 w/ bag	HDRD	Incl.
CC-100R+ w/ bag	HD15	Incl.	Mandola w/ bag		Incl.	TS-250 w/ case	Incl.	HBTR
CC-Banjitar w/ bag	HD15	Incl.	MB-850+ w/ bag		Incl.	Weissenborn, GT w/ bag	HDW	Incl.
CC-Carl12 w/ bag	HD15-M	Incl.	M-Bass & M-BassFL w/ bag	HDML23	Incl.	Weissenborn, SM+ w/ case	Incl.	HBAG
CC-Irish Tenor w/ bag	HDTR15	Incl.	M-Bass25 & M-Bass25FL w/ bag	HDML25	Incl.	WL-250 w/ case	Incl.	HPBO
CC-Mini w/ bag		Incl.	ME-Bass & ME-Bass FL w/ bag		Incl.	WR-7 w/ bag	HD15-M	Incl.

Cases & Gig Bags Dimensions

	Instruments	Model #	Fits	Interior Length	Interior Width	Depth	Upper Bout	Lower Bout
Banjo-Style Cases	Deluxe Arch 5 Res.	HDAR	14" Resonator	40"		4.75"		
	Open Back (11")	HD14	11" Openback	39.5"		3.75"		
	Resonator (13")	HD15	13" Resonator	39.5"		4.75"		
	Resonator (14")	HD16	14" Resonator	39.5"		4.75"		
	BC350, BT2000 (open)	HD15-M	12" Openback	38.5"		3.75"		
	Long Neck, Open (11")	HDLN14	11" Openback	44"		3.75"		
	Long Neck, Res (14")	HDLN16	14" Resonator	44"		4.75"		
	Irish Tenor, Open (14")	HDIT	11" Openback	32"		3.75"		
	Irish Tenor, Res (15")	HDITR15	13" Resonator	32"		4.75"		
	Irish Tenor, Res (15")	HDITR16	14" Resonator	32"		4.75"		
	Tenor (15")	HDTR15	13" Resonator	35"		4.75"		
	Tenor (16")	HDTR16	14" Resonator	35"		4.75"		
	Cello (CEB 4/5)	HDCB	14" Openback	42.5"		3.75"		
	Banjola	HDB-M	13" Teardrop	40.5"		4.75"		
BG-Mini	HDBG	10" Resonator	30.5"		4.5"			
Banjolele Dlx	HDBX	10" Resonator	27"		4.5"			
Banjo-Style Bags	Resonator Heavy Duty	HPB	Up to 14" Resonator	39"	15"	6"		
	Openback Heavy Duty	HPBO	11" Openback	38"	11"	5"		
	Resonator Light Duty	LDBR	Up to 13" Resonator	38"	14"	4"		
	Openback Light Duty	LDBO	11" Openback	38"	11"	4"		
	Long Neck, Resonator	HPBLNR	Up to 14" Resonator	44"	15"	5"		
	Long Neck, Open Back	HPBLNO	11" Openback	43"	13"	5"		
	Irish Tenor	HBIT	Up to 14" Resonator	31"	15"	5"		
	Tenor	HBTR	Up to 14" Resonator	35"	14"	5"		
	Cello (CEB 4/5)	HBCE	14" Openback	39"	16"	5"		
Guitar-Style Cases	Banjola	HBB	13" Teardrop	37"	15"	3"		
	Mini Light Duty, Open	HCC	8" Openback	28"	9"	3"		
	MB-850+	HPBMB		26"	13.5"	6"		
	Banjolele	HBJ	Up to 10" Resonator	24"	11"	5"		
	Resonator Guitar Round	HDRD	Round Neck	41"		5"	11.5"	14"
Guitar-Style Bags	Resonator Guitar Square	HDSQ	Square Neck	41"		5"	11.5"	14"
	Weissenborn	HDW		38.5"		4.5"	11"	15"
	Lap Steel	HDLS	6,8 String Models	35"		3"	6.75"	10"
	Electric (EBT,EBM, ES)	HDE	4,5,6 String Models	40.5"		3.5"	13.25"	13.25"
	Acoustic Bass (ABG)	HDAB		49"		4.5"	12.5"	16.5"
	Paul Beard Bass (PBB)	HDPBB		47.5"		5"	11.5"	14"
	MicroBass	HDMI						
	MicroBass 25	HDMI25						
	Guitar Shape	HBAG		44"	16"	6"		
	Lap Steel	HBLS	6,8 String Models	36"	13"	3"		
Mandolin Cases & Bag	MicroBass	HBMI		31"	14"	5"		
	MicroBass 25	HBMI25		28"	9"	3"		
	Mandolin, A-Style	HDMA	A-Style	27.5"	10.5"	3.5"		
	Mandolin, Shaped	HDM	F-Style	27.5"	10.5"	3.5"		
	Mandolin, Square	HDMS	F-Style	27.5"	10.5"	3.75"		
	Mandolin, Rigel-style	HDMR	Rigel	28.5"	11"	3.5"		
Mandola	HDMAN	11" Teardrop	28.5"	11.5"	3.5"			
Mandolin	HMB	A-Style	27"	10"	4"			

About Us & Warranties

Gold Tone is located in Titusville, Florida (45 min east of Orlando). Gold Tone is a family owned and operated business. In 1976, Wayne and Robyn Rogers established a full line music store, Strings-N-Things, and began building affordable instruments under the Gold Tone name in 1995. Today Gold Tone is known for our unique, affordable, and high quality instruments. as well as professional customer service.



Office Staff (left to right)

Justin Grizzle- General Manager
Mandy Rogers- Operations Manager
Darby Mae Rogers- Security
Robyn Rogers- Vice President
Wayne Rogers- President
Michael Hall- Web/IT Manager
David Tanner- Customer Relations
Jack Ramsey- Sales Manager



Instrument Technicians (left to right)

Nick Lentz - Setup Technician
Mark Fetherman - Warehouse Manager
Cory Johnson - Setup Technician
Steven Arms - Setup Technician
Nathan Taylor - Lead Technician
Chris Pariso - Lead Technician
Brian Alt- Packing & Shipping
Scotty Cockerham - Setup Technician

Please check our website for the most current instrument specs

Gold Tone Warranties

Gold Tone Banjos- Lifetime warranty to original owner, Transferable to the second owner for 5 years

Cripple Creek Model Banjos- 7 year warranty, Transferable to the second owner for 1 year

Wood & Metal Body Instruments- 5 year warranty to the original owner

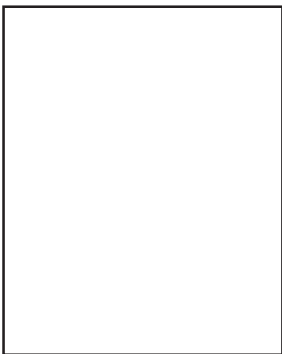
Weissenborns- 1 year warranty to the original owner.

Since these are extremely fragile models please follow Gold Tone's specification on string gauge selection, humidity control, and tuning.

AC-Series Instruments- 5 year warranty, Transferable

***International sales warranties provided through the dealer*

Gold Tone Artists



Abigail Washburn



Béla Fleck



Ben Harper



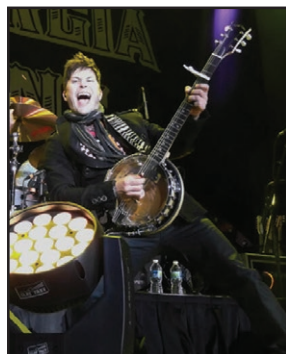
Billy Strings



Bob Carlin



Dan Davidson



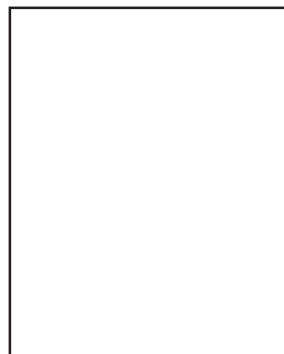
Daniel Weller
Florida-Georgia Line



Gary Morse
Brooks & Dunn



James Shelley
American Authors



Joe Caverlee
Tracy Lawrence



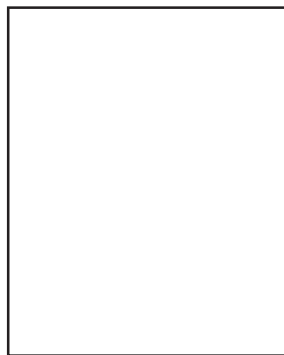
Kenny Greenberg
Kenny Chesney



Kurt Ozan
Luke Combs



Kurt Vile



Lukas Bracewell
Jake Owen



Marcy Marxer



Neil Perry
The Band Perry



Quinton Gibson
Darius Rucker



Scott Coney
Alan Jackson



Taj Mahal



Yoke Lore

Gold Tone instruments can also be found on stage and in studios with notable players such as...

Tony Trischka, Bruce Springsteen, Mick Fleetwood, Melissa Ethridge, Bill Evans, Kid Rock, David Gilmore, Dierks Bentley, SheDaisy, Thad Beaty (Sugarland), Martin Simpson, Travis Toy (Rascal Flatts), Sean Ashby (Sarah McLachlan), Craig Bartock (Heart), BB Barcus (Shania Twain), Cathy Fink, Rebekah Weiler, Marc Ganetakos (Nelly Furtado), John Butler Trio, Peter Tork (The Monkees), Drew Tenefeld (Demi Lovato), Between the Buried and Me, Justin Vernon (Bon Iver)

Wood Song

Advanced Acoustic Designs



Zero Glide Nut System



Ergo-Glide Top

Features

- Solid Sitka Spruce Top
- Double Adjusting Truss Rod
- Accurate 14:1 Ratio Die-Cast Tuners
- Sapele Back and Sides
- Rosewood Fingerboard and Bridge
- Soft-Touch Buttons
- Slim Profile/Low Taper Satin Finished Neck
- Compensated Bone Saddle
- Ten Year Transferable Warranty
- Active Pick-up w/ Built-in Tuner (Except D Series)
- Available Left Handed at No Extra Charge

www.woodsongguitars.com

Pre-Stretched Pre-Crowned Treated Aluminum Mounted

EARTHTONE

DRUMHEADS

• FEEL THE REAL •

-Earthtone Drumheads are mounted on an aluminum rim with a built-in crown, just like your standard Mylar head.

-Earthtone Drumheads have a natural texture that your brushes will love.

-Earthtone Drumheads are tanned and treated to ensure structural integrity. After the drum has "settled", minimal adjustments are needed.

-Earthtone Drumheads are stronger than other skin heads, due to the treatment of the skin.

-Earthtone Drumheads range from 6 inches through 24 inches.

-Earthtone Drumheads are substantially less than other calfskin companies.

Feel the Real with Earthtone

Available in the following sizes:

6" 8" 10" 11" 12" 13" 14"(14"SS) 15" 16" 18" 20" 22" 24"

www.earthtonedrumheads.com



José Ramirez®

The Redesigned Collection

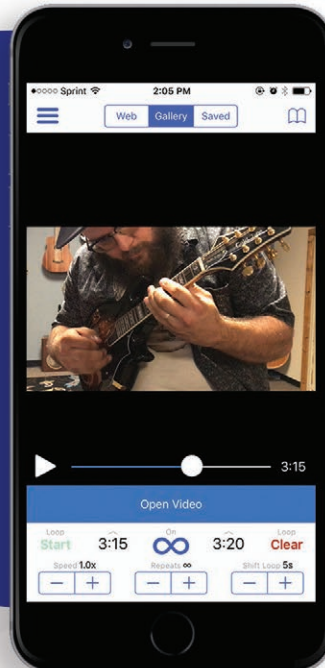
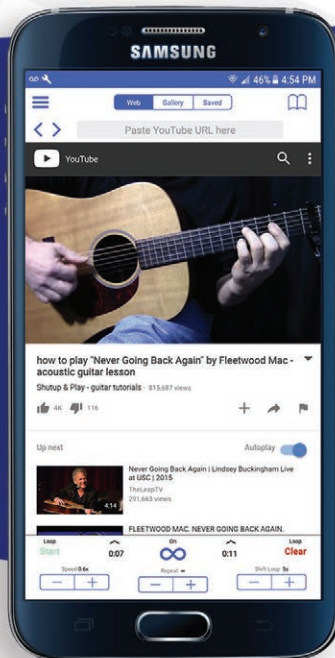
From The Most Renowned Name in Spanish Handmade Classical Guitars

For over 130 years, José Ramirez has meticulously built the finest classical and flamenco guitars in the world.

www.ramirezguitarsusa.com

Loop2Learn

Loop.
Learn.
Repeat.



Loop a part of any video (either from Youtube, or your device) and watch it over and over again to learn from it.

No more dragging the playhead.

loop2learn.com



Gold Tone Music Group Product Lines include:

Gold Tone, Inc	www.goldtone.com
WoodSong Acoustic Guitars	www.woodsongguitars.com
Zero Glide Replacement Nut System	www.zeroglide.com
EarthTone Calfskin Drumheads	www.earthtoneheads.com
Ramirez Guitars	www.ramirezguitarsusa.com
Loop2Learn	www.loop2learn.com

